

# GOLD IN THE WILD

## THE HISTORY OF THE ABITIBI, CANADA'S MOST PROLIFIC GOLD REGION

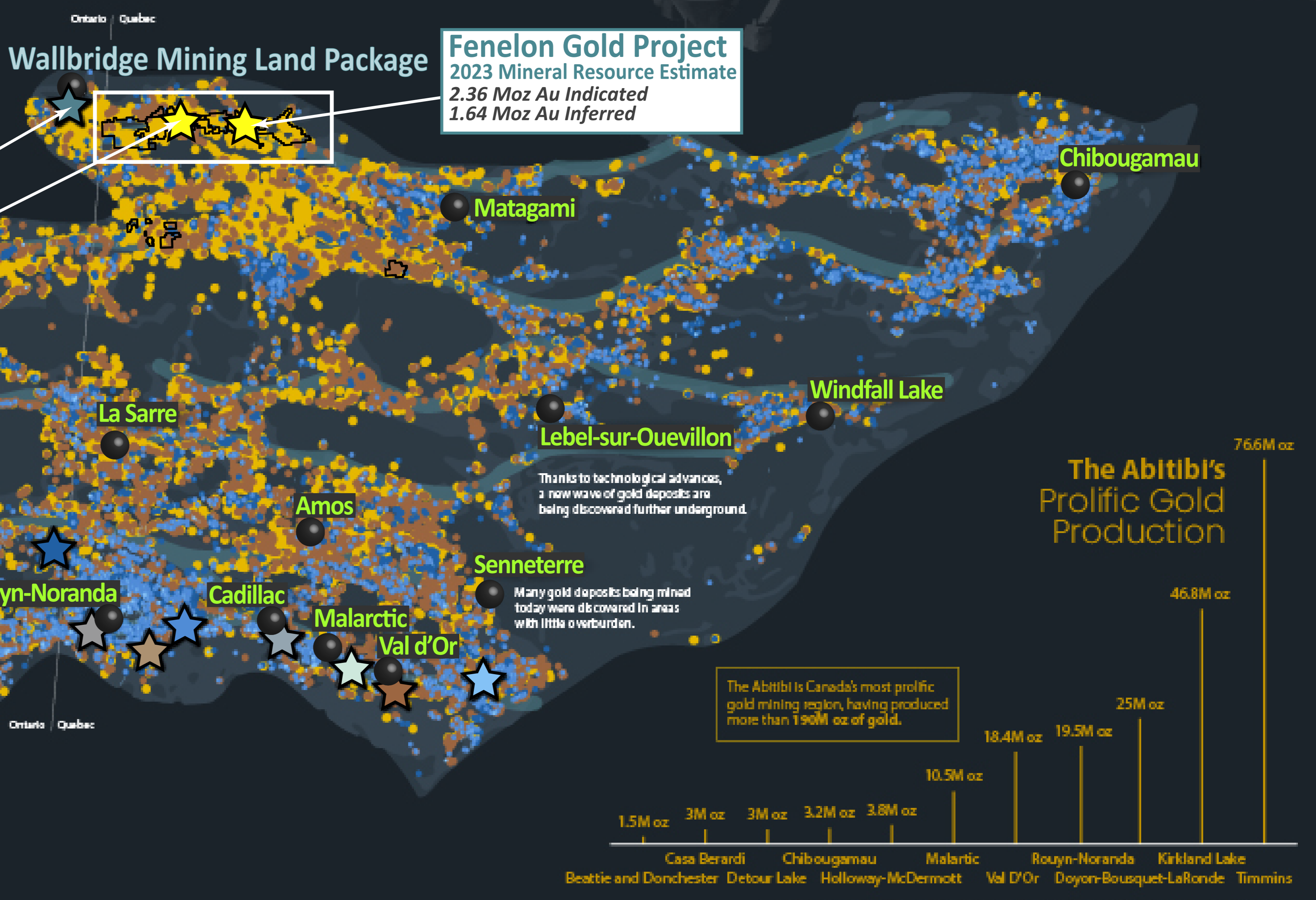
The Abitibi greenstone belt is Canada's primary source of gold production.

With a history of golden discoveries at surface, more gold lies underground to be explored.



**THREE LEGENDARY MINES OF THE PORCUPINE GOLD RUSH**

<b>Goldcorp's Dome mine</b> Produced >17M oz Operational from 1910-2017	<b>North America's longest continuously running gold mine.</b> A recent discovery could see the mine reopen soon, as the Century Project.	<b>The Hollinger mine</b> Produced >19.5M oz Operational from 1910-1908	<b>The McIntyre mine</b> Produced >10.8M oz Operational from 1912-1988
---	--	---	--

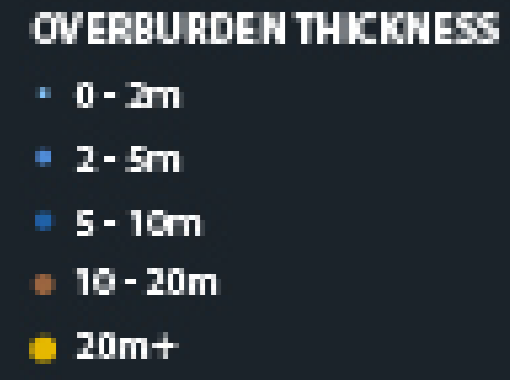


### Gold Discovery and Development in the Abitibi

While small gold deposits were discovered in Quebec in the 1800s, gold exploration in the Abitibi flourished in the 20th century.

With new methods of exploration, there could be more to find under the Abitibi's overburden.

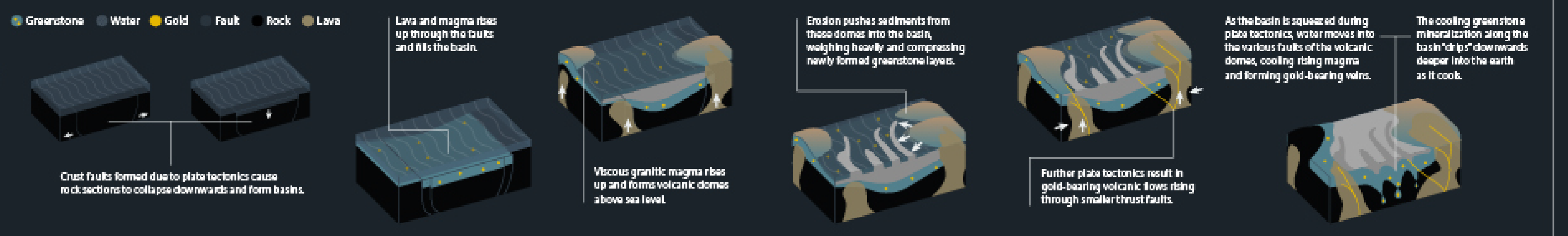
Overburden is the topsoil that covers mineral deposits.



### Finding the Faults Understanding the Abitibi Geology

The Abitibi greenstone belt is over 2.6 billion years old and is the largest greenstone belt on the planet.

Plate and pre-plate tectonics have resulted in gold mineralization near the surface and further below, providing many gold deposits.



Sources: MNDM Statistics, Kirkland Lake Gold, CBay Minerals, Agnico Eagle, Hecla Mining Company, MMland Exploration, Ministry of Northern Development, Mines, Natural Resources and Forestry