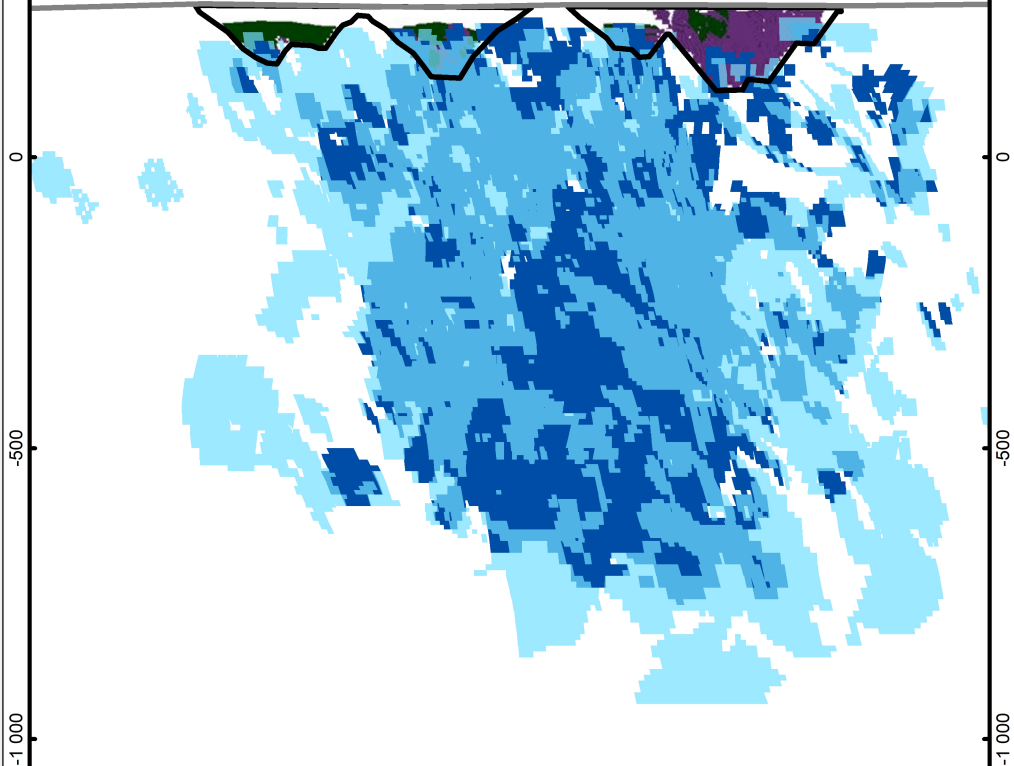


NW

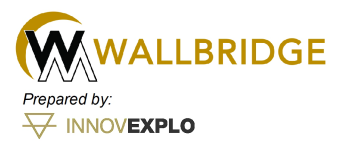
2023 MRE

SE



Looking 030°
 1000 m corridor
 January 13, 2023

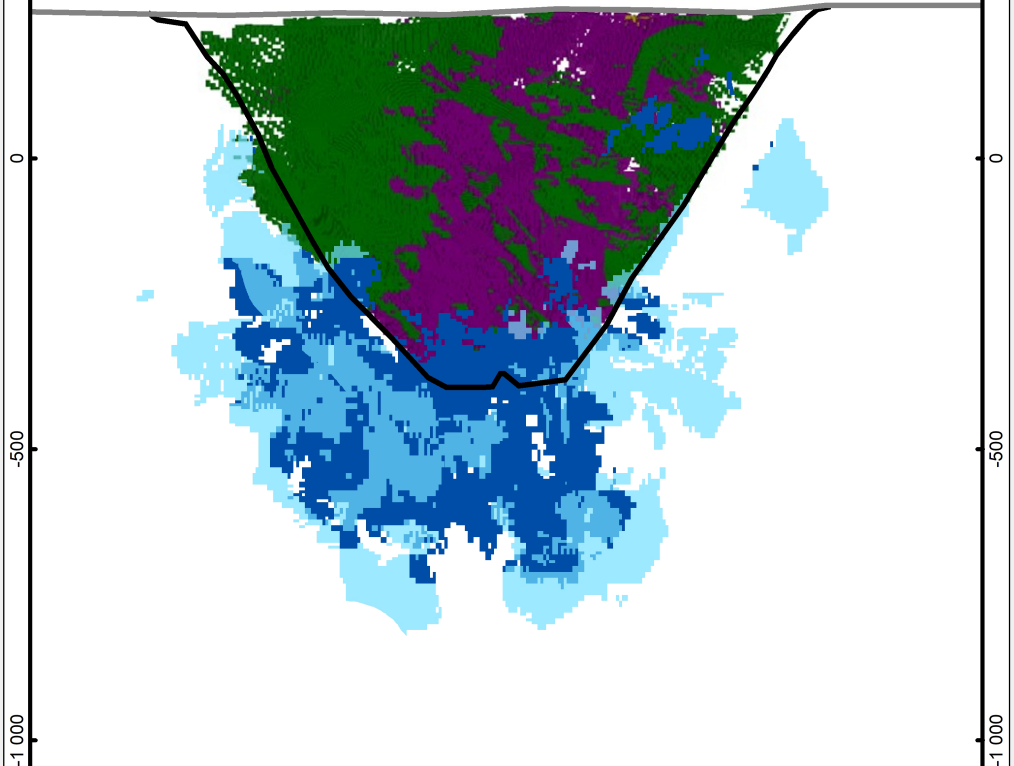
- Indicated (In Pit, >0.45 g/t Au)
- Inferred (In Pit, >0.45 g/t Au)
- Indicated (DSO, >1.50 g/t Au)
- Inferred (DSO, >1.50 g/t Au)
- Open Pit Outline



NW

2021 MRE

SE



Looking 030°
 500 m corridor
 November 09, 2021

- Indicated (In Pit, >0.35 g/t Au)
- Inferred (In Pit, >0.35 g/t Au)
- Indicated (DSO, >1.50 g/t Au)
- Inferred (DSO, >1.50 g/t Au)
- Open Pit Outline

