



Growing Gold Resources in Quebec's Abitibi

September 2024



Cautionary Note Regarding Forward-Looking Information



The information in this document may contain forward-looking statements or information (collectively, "FLI") within the meaning of applicable Canadian securities legislation. FLI is based on expectations, estimates, projections and interpretations as at the date of this document.

All statements, other than statements of historical fact, included herein are FLI that involve various risks, assumptions, estimates and uncertainties. Generally, FLI can be identified by the use of statements that include, but are not limited to, words such as "seeks", "believes", "anticipates", "plans", "continues", "budget", "scheduled", "estimates", "expects", "forecasts", "intends", "projects", "predicts", "proposes", "potential", "targets" and variations of such words and phrases, or by statements that certain actions, events or results "may", "will", "could", "would", "should" or "might", "be taken", "occur" or "be achieved."

FLI in this document may include, but is not limited to: statements regarding the results of the PEA; the potential future performance of the Common Shares; future drill results; the Company's ability to convert inferred resources into measured and indicated resources; environmental matters; stakeholder engagement and relationships; parameters and methods used to estimate the MRE's at Fenelon and Martiniere (collectively the "Deposits"); the prospects, if any, of the Deposits; future drilling at the Deposits; and the significance of historic exploration activities and results.

FLI is designed to help you understand management's current views of its near- and longer-term prospects, and it may not be appropriate for other purposes. FLI by their nature are based on assumptions and involve known and unknown risks, uncertainties and other factors which may cause the actual results, performance, or achievements of the Company to be materially different from any future results, performance or achievements expressed or implied by such FLI. Although the FLI contained in this document is based upon what management believes, or believed at the time, to be reasonable assumptions, the Company cannot assure shareholders and prospective purchasers of securities of the Company that actual results will be consistent with such FLI, as there may be other factors that cause results not to be as anticipated, estimated or intended, and neither the Company nor any other person assumes responsibility for the accuracy and completeness of any such FLI. Except as required by law, the Company does not undertake, and assumes no obligation, to update or revise any such FLI contained in this document to reflect new events or circumstances. Unless otherwise noted, this document has been prepared based on information available as of the date of this document. Accordingly, you should not place undue reliance on the FLI, or information contained herein.

Furthermore, should one or more of the risks, uncertainties or other factors materialize, or should underlying assumptions prove incorrect, actual results may vary materially from those described in FLI.

Assumptions upon which FLI is based, without limitation, include: the results of exploration activities, the Company's financial position and general economic conditions; the ability of exploration activities to accurately predict mineralization; the accuracy of geological modelling; the ability of the Company to complete further exploration activities; the legitimacy of title and property interests in the Deposits; the accuracy of key assumptions, parameters or methods used to estimate the MREs and in the PEA; the ability of the Company to obtain required approvals; geological, mining and exploration technical problems; failure of equipment or processes to operate as anticipated; the evolution of the global economic climate; metal prices; foreign exchange rates; environmental expectations; community and non-governmental actions; and, the Company's ability to secure required funding. Risks and uncertainties about Wallbridge's business are discussed in the disclosure materials filed with the securities regulatory authorities in Canada, which are available at www.secdarplus.ca.

Cautionary Note to United States Investors

Wallbridge prepares its disclosure in accordance with NI 43-101 which differs from the requirements of the U.S. Securities and Exchange Commission (the "SEC"). Terms relating to mineral properties, mineralization and estimates of mineral reserves and mineral resources and economic studies used herein are defined in accordance with NI 43-101 under the guidelines set out in CIM Definition Standards on Mineral Resources and Mineral Reserves, adopted by the Canadian Institute of Mining, Metallurgy and Petroleum Council on May 19, 2014, as amended. NI 43-101 differs significantly from the disclosure requirements of the SEC generally applicable to US companies. As such, the information presented herein concerning mineral properties, mineralization and estimates of mineral reserves and mineral resources may not be comparable to similar information made public by U.S. companies subject to the reporting and disclosure requirements under the U.S. federal securities laws and the rules and regulations thereunder.

Cautionary Notes and Definitions Regarding PEA

On June 26, 2023, the Company announced positive results from the PEA completed on Fenelon. The 2023 MRE formed the foundation for the PEA which assessed the potential for a predominantly underground bulk mining operation at Fenelon. The Company cautions that the results of the PEA are forward-looking and preliminary in nature and include inferred mineral resources that are considered too speculative geologically to have economic considerations applied to them to be classified as mineral reserves. There is no certainty that the results of the PEA will be realized. The PEA financial economic analysis is significantly influenced by gold prices. The following summary includes certain non-IFRS financial measures, such as free cash flow, initial capital expenditures, sustaining capital expenditures, total cash costs and all in sustaining costs, which are not measures recognized under IFRS and do not have a standardized meaning prescribed by IFRS. The disclosure of such non-IFRS financial measures is required under National Instrument 43-101 - Standards of Disclosure for Mineral Projects ("NI 43-101") and has been prepared in accordance with NI 43-101. Although reconciliations to equivalent historical measures are not available. Please refer to the cautionary language and non-IFRS financial measures for detailed definitions and descriptions of such measures.

QP - Statement

The scientific and technical information of the Company and of the Fenelon, Martinière and Grasset properties included in this presentation have been reviewed and approved by Francois Chabot, Eng., Technical Studies Manager of Wallbridge and a Qualified Person as defined by NI 43-101.

All results are reported in Canadian dollars unless otherwise indicated

Non-IFRS Measures

Wallbridge has included certain non-IFRS financial measures in this presentation, such as free cash flow, initial capital expenditures, sustaining capital expenditures, total cash costs and all in sustaining costs, which are not measures recognized under IFRS and do not have a standardized meaning prescribed by IFRS. As a result, these measures may not be comparable to similar measures reported by other companies. Each of these measures used are intended to provide additional information to the user and should not be considered in isolation or as a substitute for measures prepared in accordance with IFRS. Non-IFRS financial measures used herein and common to the gold mining industry are defined below.

Free cash flow was estimated as the amount of cash generated by Fenelon after all operating and capital expenditures have been paid.

Initial and sustaining capital expenditures in the PEA were estimated based on current costs received from vendors as well as developed from first principles, while some were estimated based on factored references and experience from similar operating projects. Initial capital expenditures represent the construction and development costs to achieve commercial production and sustaining capital expenditures represent the construction and development costs subsequent to commercial production. A description of the significant cost components for initial and sustaining capital costs included in the PEA are summarized below:

Cost Element	Initial Capital (\$M) ^{1,2}	Cost Element	Initial Capital (\$M) ^{1,2}	Payable Ounces	LOM Costs (Millions)	US\$ Per Ounce
Mill	220	Production Shaft	143			
Paste Plant	46	Mining Equipment	140	Cash Operating Costs	2,606,384	679
Tailings and Water Treatment	36	Development	158	Royalties	237.2	70
Capitalized Operating (Pre-Production)	99	Tailings & Water Treatment	63	Total Cash Costs	2,536.6	749
Surface Civil & Infrastructure	87	Paste Distribution Network	13	Sustaining Capital Expenditures and Closure	594.4	175
Mining Equipment	18	Underground Infrastructure	45	All in Sustaining Costs	3,131.0	924
Underground Development	83	Surface Infrastructure	26			
Hydro Electric Line & Distribution	55	Closure	8			
Total Initial Capital	\$645	Total Sustaining Capital	\$594			

¹ All values stated are undiscounted. No depreciation of costs was applied.

² Non-IFRS financial performance measures with no standardized definition under IFRS.

¹ All values stated are undiscounted. No depreciation of costs was applied.

² Non-IFRS financial performance measures with no standardized definition under IFRS.

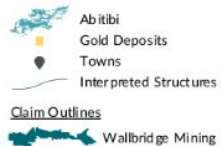
Total cash costs are reflective of the cost of production. Total cash costs reported in the PEA include mining costs, processing, general and administrative costs of the mine, off-site costs, refining costs, transportation costs and royalties. Total cash costs per ounce is calculated as total cash costs divided by payable gold ounces.

All-in sustaining costs and all-in sustaining costs per ounce are reflective of all of the expenditures that are required to produce an ounce of gold from operations. All-in sustaining costs reported in the PEA include total cash costs, sustaining capital, closure costs, but exclude corporate general and administrative costs. All-in sustaining costs per ounce is calculated as all-in sustaining costs divided by payable gold ounces.

A description of the significant cost components that make up the forward looking non-IFRS financial measures of total cash costs and all in sustaining costs per ounce of payable gold produced is shown in the table.

Abitibi Greenstone Belt

North vs. South



Martiniere Gold Project

2023 Mineral Resource Estimate
0.68 Moz Au Indicated
0.63 Moz Au Inferred

Fenelon Gold Project

2023 Mineral Resource Estimate
2.37 Moz Au Indicated
1.72 Moz Au Inferred

Detour Lake Mine

AEM, Dec 31, 2023
Reserves: 19.9M Oz
Resources: 18.5M Oz (Measures Indicated)
2023 Production 677,446 oz gold

Northern Abitibi

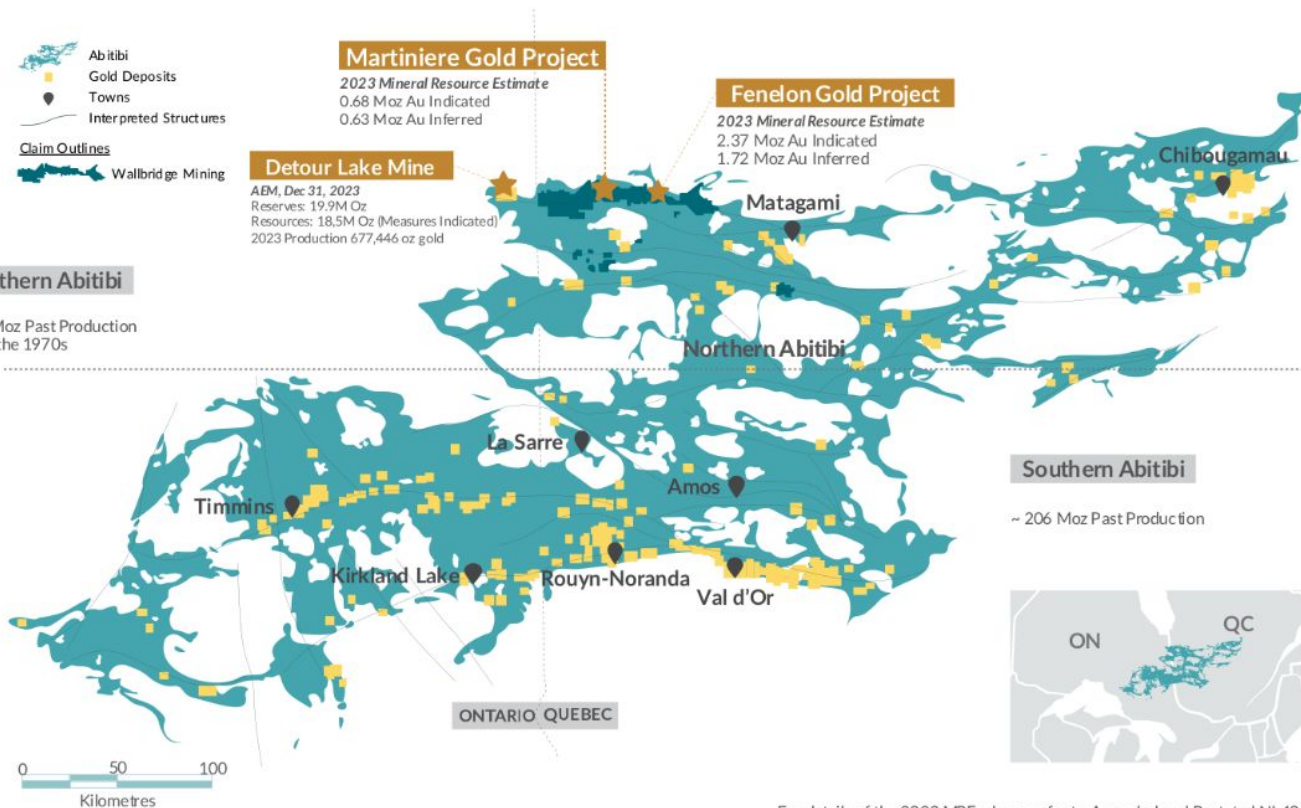
~ 15 Moz Past Production
Since the 1970s

Southern Abitibi

~ 206 Moz Past Production

Northern vs. Southern Abitibi

- Similar geology
- World-Class potential demonstrated (40 Moz Detour Lake)
- Less exploration maturity due to:
 - Less accessible in the past
 - Farther from urban centers
 - Limited surface outcrops



For details of the 2023 MRE, please refer to Amended and Restated NI 43-101 Technical Report filed on December 29, 2023, on SEDAR+.

District Scale – Detour-Fenelon Gold Trend



Multi-Million Ounce Gold Resources

Detour Lake mine
(Agnico Eagle Mines)
Canada's largest gold mine
2023 Production 677,446 oz gold

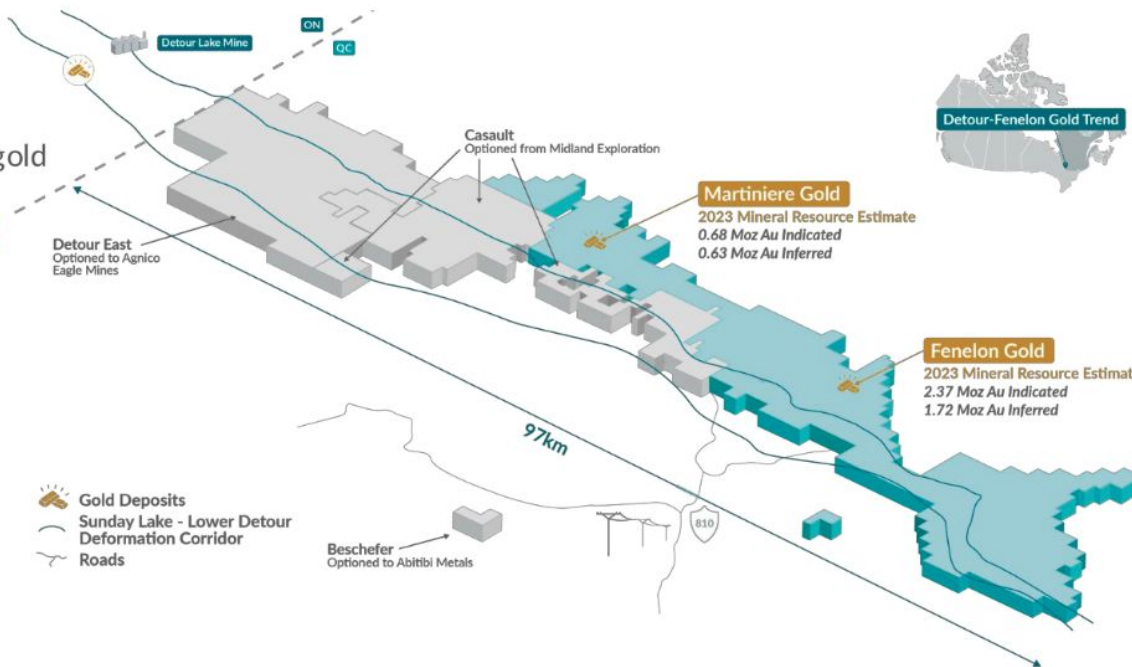
Wallbridge 2023 Mineral Resource Estimate

Fenelon Gold

2.37 Moz Au Indicated
1.72 Moz Au Inferred

Martiniere Gold

0.68 Moz Au Indicated
0.63 Moz Au Inferred



MULTI-MILLION OUNCE DEPOSIT

GROWTH POTENTIAL

2 SIGNIFICANT GOLD DEPOSITS

TOP JURISDICTION

DISTRICT SCALE

Major Milestones

From Discovery to PEA



Acquires Fenelon Project

MAY 2016

- 10.5km² Property
- Fenelon Deposit
- 13 Koz Au Measured
- 25 Koz Au Indicated

Acquires Balmoral Res.

MAY 2020

- >900 Km² land package
- Martiniere Deposit
- 590 Koz Au (Indicated)

Divest All Nickel Assets

NOV 2022

- Returned capital to shareholders
- Maintained 19.9% ownership in Archer (now NorthX Nickel)
- Kept 2% Royalty on Grasset Property

PEA (Fenelon)

JUNE 2023

- 7,000 tpd
- NPV5% \$721 million
- 212,000 Au oz annually
- 12 years mine life
- Initial capex \$645 million
- 18% After-tax IRR

Major Discovery

Q1 2019

- Area 51 & Tabasco/ Cayenne Zones

MRE at Fenelon & Martiniere

NOV 2021

Maiden MRE at Fenelon
 2.13 Moz Indicated
 1.47 Moz Inferred
 MRE update at Martiniere
 544 Koz Indicated
 256 Koz Inferred

MRE at Fenelon & Martiniere

JAN 2023

Updated MRE at Fenelon
 2.37 Moz Indicated (84% grade increase)
 1.72 Moz Inferred (85% grade increase)
 MRE update at Martiniere
 684 Koz Indicated
 632 Koz Inferred

2023 Year in Review



Unlocking Value on Strategic Land Package

- ✓ Updated MRE for Detour-Fenelon Gold Trend Property (Fenelon and Martiniere)
- ✓ Completed positive PEA on Fenelon Gold Project
- ✓ Drilled ~49,000 m on the Detour-Fenelon Gold Trend Property
- ✓ Discovered new greenfield gold mineralization at Grasset Gold and in the vicinity of Fenelon and Martiniere MREs
- ✓ Achieved 5 years without a lost time safety incident (Dec. 31, 2023)



2024 Program



Advance Martiniere and Fenelon Toward Combined PEA for 2026

Test regional greenfields exploration targets for discovery

2024 Work Program	Drilling (m)	Budget (M)
Martiniere – resource and exploration drilling (includes \$900,000 of technical and environmental studies)	13,000	\$8.9
Fenelon – expansion of known mineralization and exploration drilling (including \$900,000 of technical and environmental studies)	5,000	\$4.5
Regional exploration – exploration drilling, geophysics and others	5,000	\$3.6
Capital expenditures		\$0.2
General & administrative costs		\$4.0
Total		\$21.2



Strong Technical Team

District Scale – Detour-Fenelon Gold Trend



Multi-Million Ounce Gold Resources

Detour Lake mine
(Agnico Eagle Mines)
Canada's largest gold mine
2023 Production 677,446 oz gold

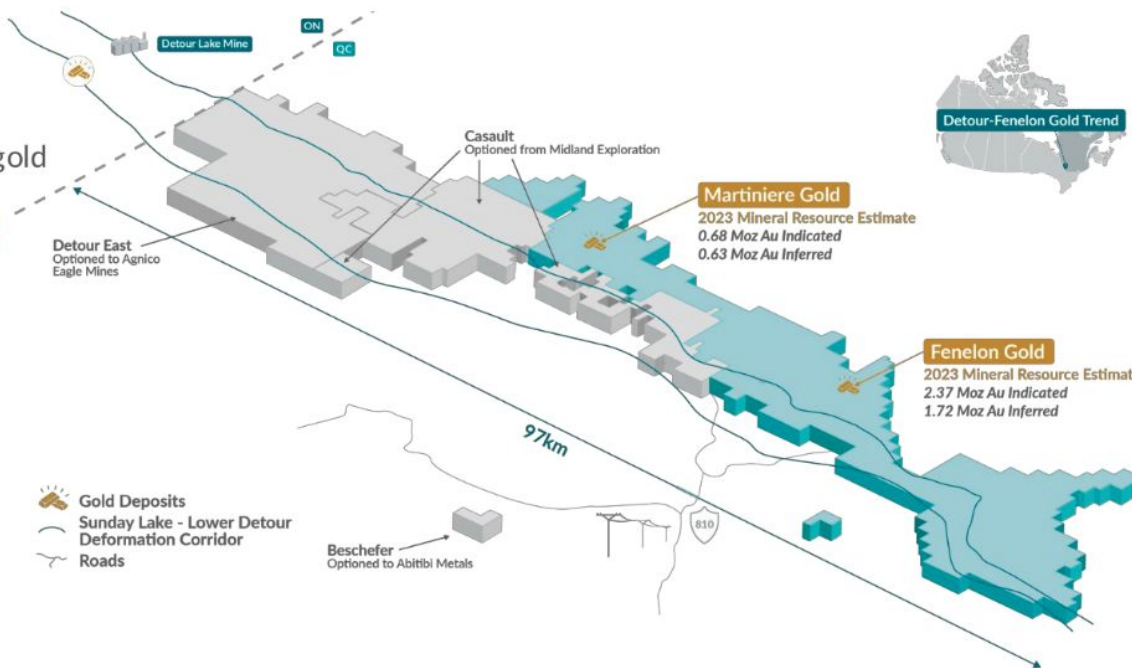
Wallbridge 2023 Mineral Resource Estimate

Fenelon Gold

2.37 Moz Au Indicated
1.72 Moz Au Inferred

Martiniere Gold

0.68 Moz Au Indicated
0.63 Moz Au Inferred



MULTI-MILLION OUNCE DEPOSIT

GROWTH POTENTIAL

2 SIGNIFICANT GOLD DEPOSITS

TOP JURISDICTION

DISTRICT SCALE

Continual Improvement

 <p>Social Responsibility</p>	<ul style="list-style-type: none"> - Local sourcing from Abitibi to every extent possible - Local hiring from Abitibi and surrounding First Nation communities - Supporting business startup - Supporting research projects 	 <p>Health, Safety, & Wellbeing</p>	<ul style="list-style-type: none"> - Prioritizing EHS system evolution - Health, Safety, Environmental and Community Policies in place - Achieved 5 years without a lost time accident
 <p>Environment</p>	<ul style="list-style-type: none"> - Inaugural ESG report in 2022 - Reducing GHGs by implementing group transportation - Discharging water to Directive 019 at Fenelon - Cleanup of sites from previous owners 	 <p>Cultural Heritage & Diversity</p>	<ul style="list-style-type: none"> - About 18% Indigenous workforce - Developed cultural awareness program - Constructed cultural center - Signed PDA with Cree Communities
 <p>Economic Contributions</p>	<ul style="list-style-type: none"> - Funded \$1.5M of road improvements - We use regional suppliers as much as possible - Encourage service providers to include Indigenous components within their business 	 <p>Governance</p>	<p>Built on:</p> <ul style="list-style-type: none"> - Ethics and transparency - Accountability - Responsibility - Risk management

Environment, Permitting



Strong Partnership with First Nations

Stakeholder Engagement

- Over 130 engagement activities with stakeholders
- Regular meetings with First Nation communities of Washaw Sibi, Waskaganish and Abitibiwinni (Pikogan)
- Pre-development agreement in place with Cree communities of Washaw Sibi and Waskaganish
- About 18% of workforce from First Nations

Permitting, current status:

- Meeting obligations for effluent regulations (pit dewatering)
- Required permits for surface drilling

Permitting, ongoing work:

- Acquisition of baseline environmental knowledge on Fenelon property since 2021
- Physical and biological environment characterization: Hydrogeological, ambient air quality, terrestrial vegetation and wetlands, fauna
- To date, no major environmental issues have been identified in work undertaken at the Fenelon project



Supportive Shareholders



Share Structure – As of August 8, 2024

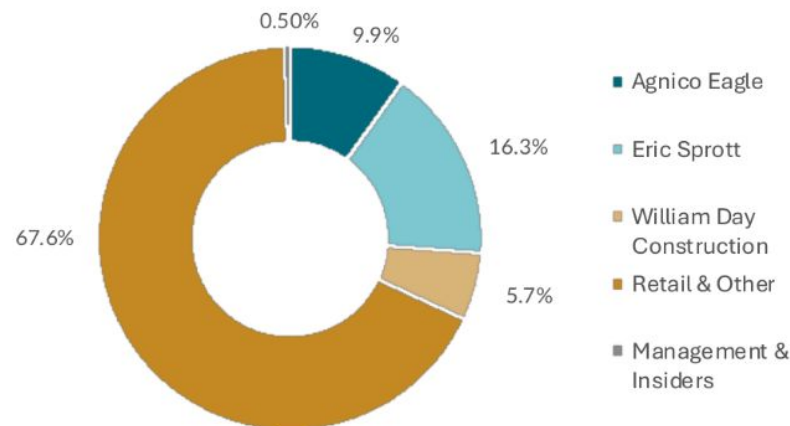
52-Week Trading Range \$0.06–\$0.16

Shares Outstanding – Basic 1,016.2 M

Shares Outstanding - Fully-diluted** 1,058.8 M

Cash & Cash Equivalents – June 30, 2024 ~\$25.3M

Shareholder Distribution



Analyst Coverage

Andrew Mikitchook



Don Blyth



**34,000,411 options outstanding with an exercise price of \$0.30 and a weighted average life of 5.1 years
 **500,000 warrants outstanding with an exercise price of \$1.00 and a weighted average life of 0.6 years
 **8,015,715 DSUs (Deferred Stock Units) Outstanding

Positive PEA at Fenelon



A Great Starting Point

ANNUAL GOLD
PRODUCTION

212,000
Ounces

ANNUAL FREE
CASHFLOW ^{2,4}

\$157
Million

INITIAL CAPITAL ²

\$645
Million

SUSTAINING CAPITAL ²

\$594
Million

TOTAL CASH COSTS ^{1,2,4}

\$749
US\$/oz

AISC ^{2,3,4}

\$924
US\$/oz

AFTER-TAX NPV ^{5%⁴}

\$721
Million

AFTER-TAX INTERNAL
RATE OF RETURN

18 %

¹ Total cash costs include mining, processing, tailings, surface infrastructure, transport, G&A and royalty costs.

² Non-IFRS financial performance measures with no standardized definition under IFRS. Refer to note on slide 3 of this presentation.

³ All-in-sustaining costs ("AISC") include total cash costs, sustaining capital expenses to support the ongoing operations, and closure and rehabilitation costs divided by payable gold ounces.

⁴ Assumed gold price of US \$1,750 per ounce.

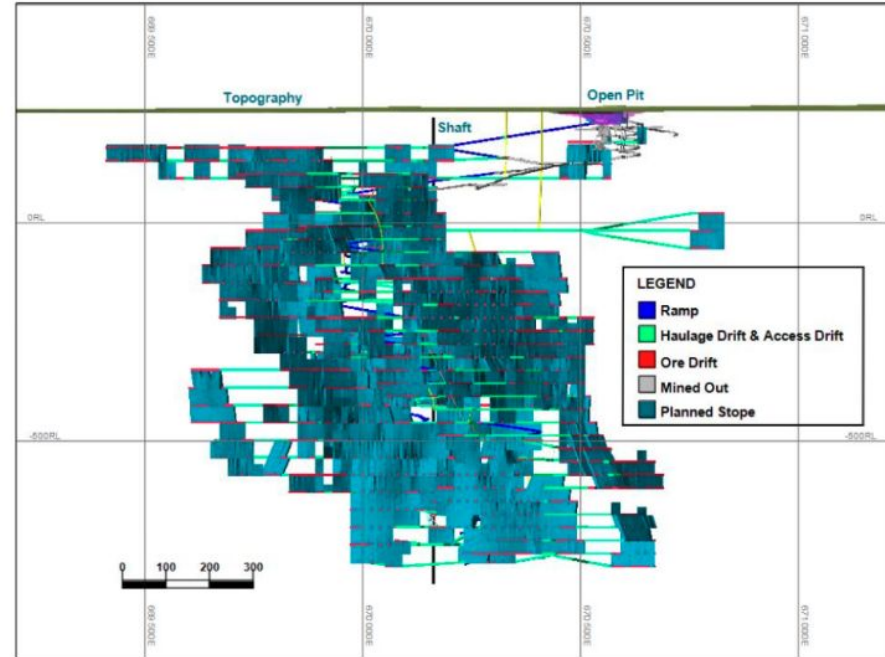
Fenelon PEA Approach

First Principles Approach, Realistic Costs

PEA Approach

- First principles: new project starting with a clean slate
- Stope optimization: Iterative process to develop a large UG operation based on January 2023 MRE, rock mechanics and projected stope productivity
- Trade-off studies: material handling, tailings management, mobile equipment
- Capex: Integrate existing infrastructure utilizing a phased approach
- Opex: Detailed evaluation, current (2023) costs; benchmarking against similar operations

Longitudinal section looking North



Fenelon PEA



Efficient Capital Allocation

Initial Capital Expenditures

Cost Element	Initial Capital (\$M) ^{1,2}
Mill	220
Paste Plant	46
Tailings and Water Treatment	36
Capitalized Operating (Pre-Production)	99
Surface Civil & Infrastructure	87
Mining Equipment	18
Underground Development	83
Hydro Electric Line & Distribution	55
Total Initial Capital	\$645

Sustaining Capital Expenditures

Cost Element	Initial Capital (\$M) ^{1,2}
Production Shaft	143
Mining Equipment	140
Development	158
Tailings & Water Treatment	63
Paste Distribution Network	13
Underground Infrastructure	45
Surface Infrastructure	26
Closure	8
Total Sustaining Capital	\$594

Total Cash Costs

	LOM Total (\$ million)	Average LOM (\$/tonne milled)	Average LOM (US\$/oz)
Mining	1,320	42.7	391
Processing	521	16.8	153
Water Treatment & Tailings	51	1.6	15
General & Admin	408	13.2	120
Royalty (4%)	237	7.7	70
Total Cash Costs^{2,3}	2,537	82.0	749

¹ All values stated are undiscounted. No depreciation of costs was applied.

² Non-IFRS financial performance measures with no standardized definition under IFRS. Refer to note on slide 3 of this presentation.

³ Total operating costs include mining, processing, tailings, surface infrastructure, transport, G&A and royalty costs.

PEA Sensitivity Analysis



Double-Digit IRR Across Gold Price Scenarios

Gold Price (US \$/oz)	FX	NPV (\$M)	IRR (%)	Payback Years
\$1,600	1.30	512	14	6.2
\$1,750	1.30	721	18	5.4
\$1,900	1.30	923	21	4.6
\$1,950	1.34	1070	24	4.2

NPV Sensitivity – Operating and Capital Costs

Operating Costs	\$M	Capital Costs	\$M
Base Case -10%	823	Base Case -10%	786
Base Case	721	Base Case	721
Base Case +10%	614	Base Case +10%	653
Base Case +20%	506	Base Case +20%	586

Detour-Fenelon Gold Trend

Under-explored Greenstone Belt Hosting Canada's Largest Producing Gold Mine

Detour Lake Mine

AEM, Dec 31, 2023

Reserves: 19.9M Oz (Proven Probable)

Resources: 18.5M Oz (Measures Indicated)

2023 Production 677,446 oz gold

Detour East

Optioned to Agnico Eagle Mines

Martiniere Gold

2023 Mineral Resource Estimate

0.68 Moz Au Indicated

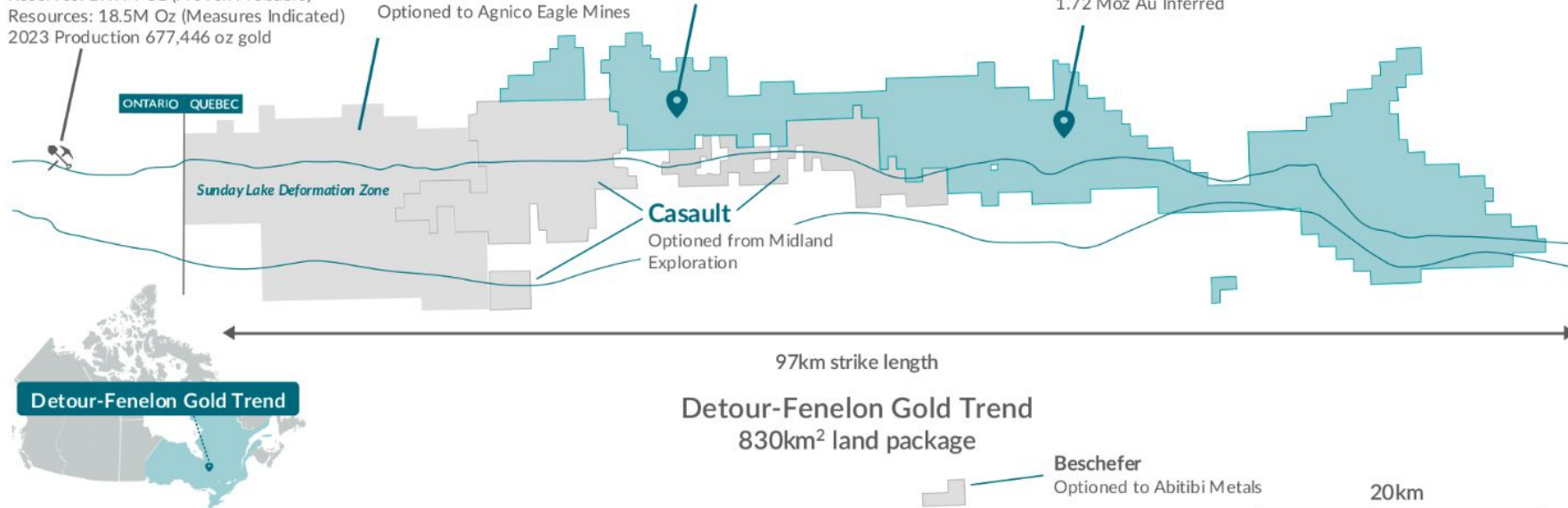
0.63 Moz Au Inferred

Fenelon Gold

2023 Mineral Resource Estimate

2.37 Moz Au Indicated

1.72 Moz Au Inferred



Detour-Fenelon Gold Trend
830km² land package

For details of the 2023 MRE, please refer to Amended and Restated NI 43-101 Technical Report filed on December 29, 2023, on SEDAR+.

Fenelon Gold Project

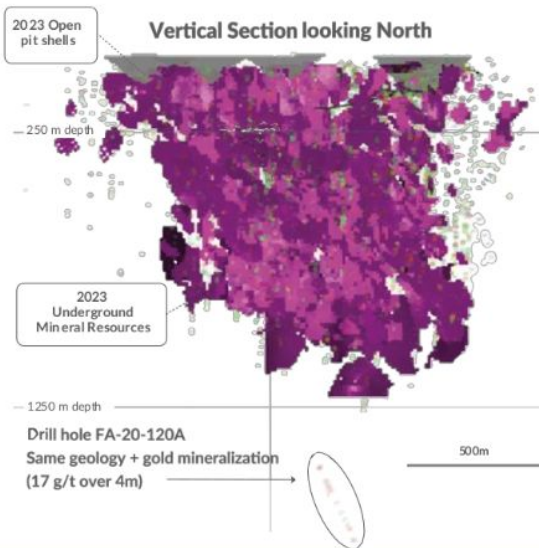
Quality Of Gold Ounces

2023 MRE

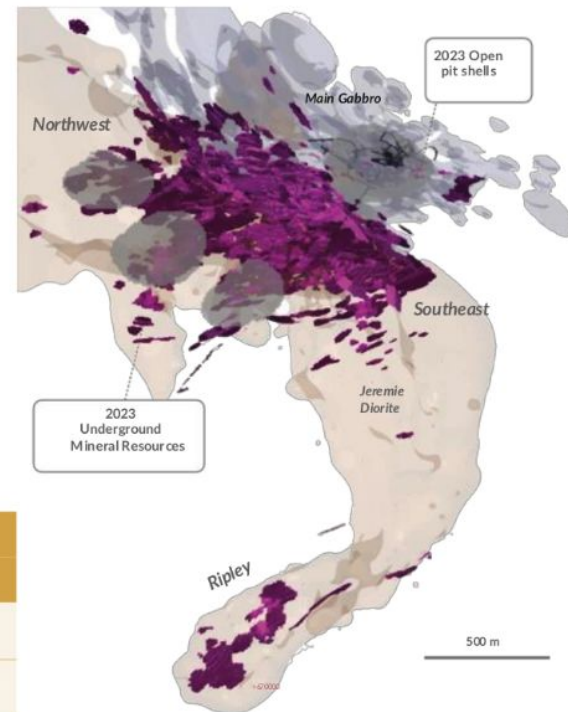
- Predominately underground resource
- 58% of resource in Indicated category

2024 Plans

- Resource delineation and infill drilling to upgrade and grow resources beyond the current 2023 PEA mine design
- Technical studies focused on improving project design and economics

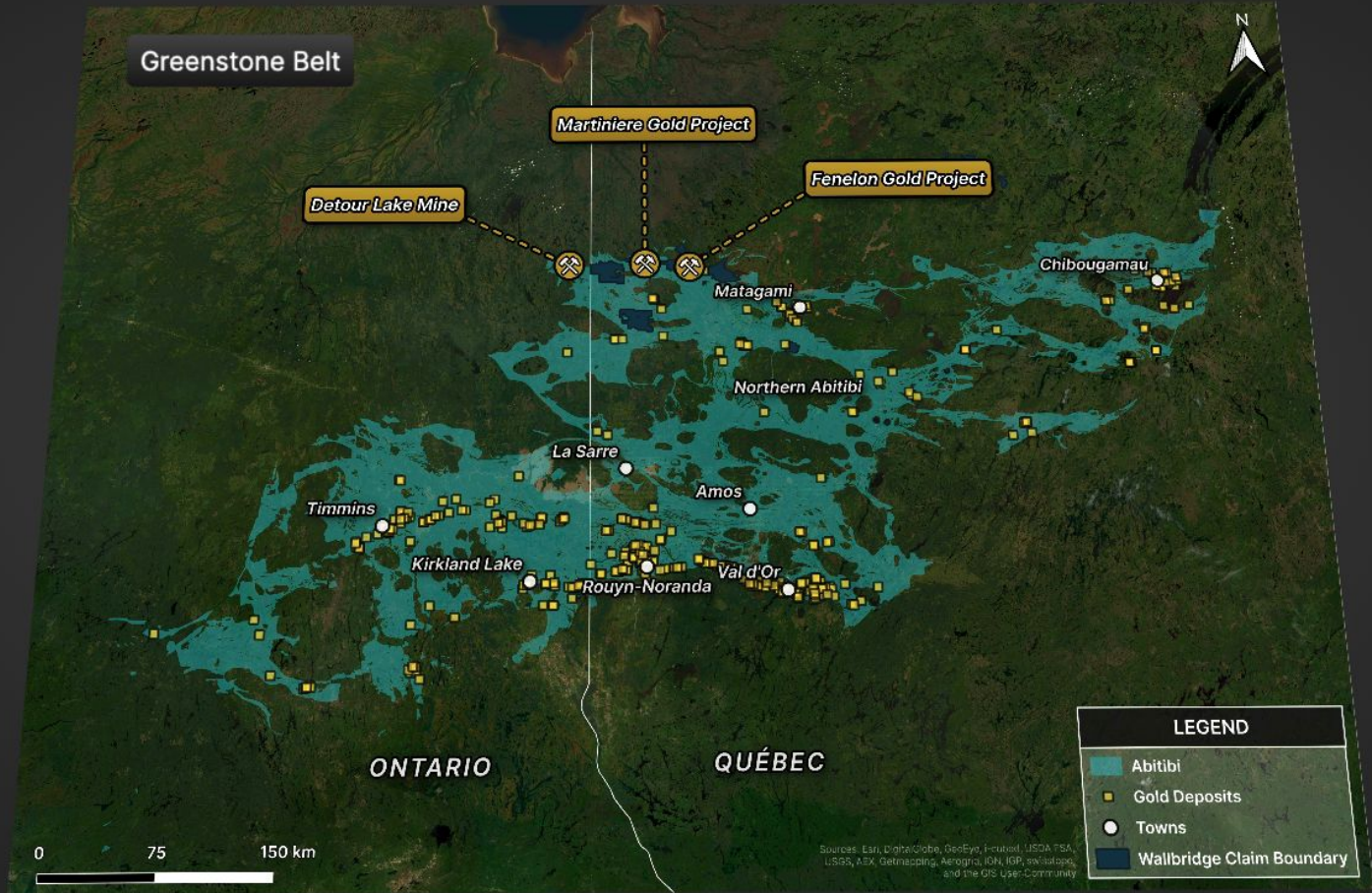


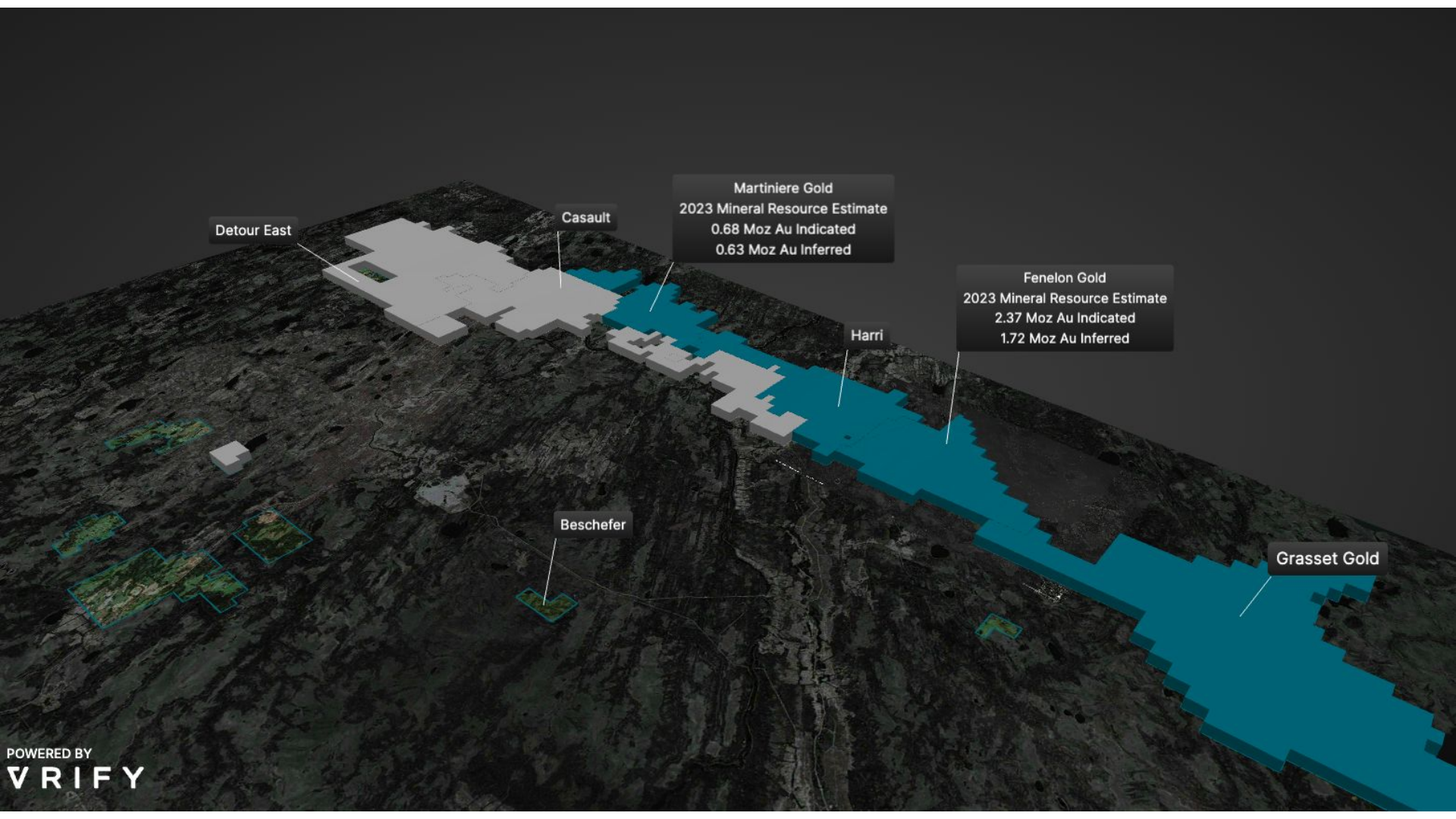
Plan view



Fenelon Gold Property		2023		
		Tonnes	Au g/t	Ounces
Open Pit	Indicated	727,400	4.46	104,400
	Inferred	303,900	4.08	39,800
Underground	Indicated	20,931,700	3.37	2,265,200
	Inferred	18,181,400	2.87	1,678,500
Total	Indicated	21,659,100	3.40	2,369,600
	Inferred	18,485,300	2.89	1,718,400

For details of the 2023 MRE, please refer to Amended and Restated NI 43-101 Technical Report filed on December 29, 2023, on SEDAR+.





Detour East

Casault

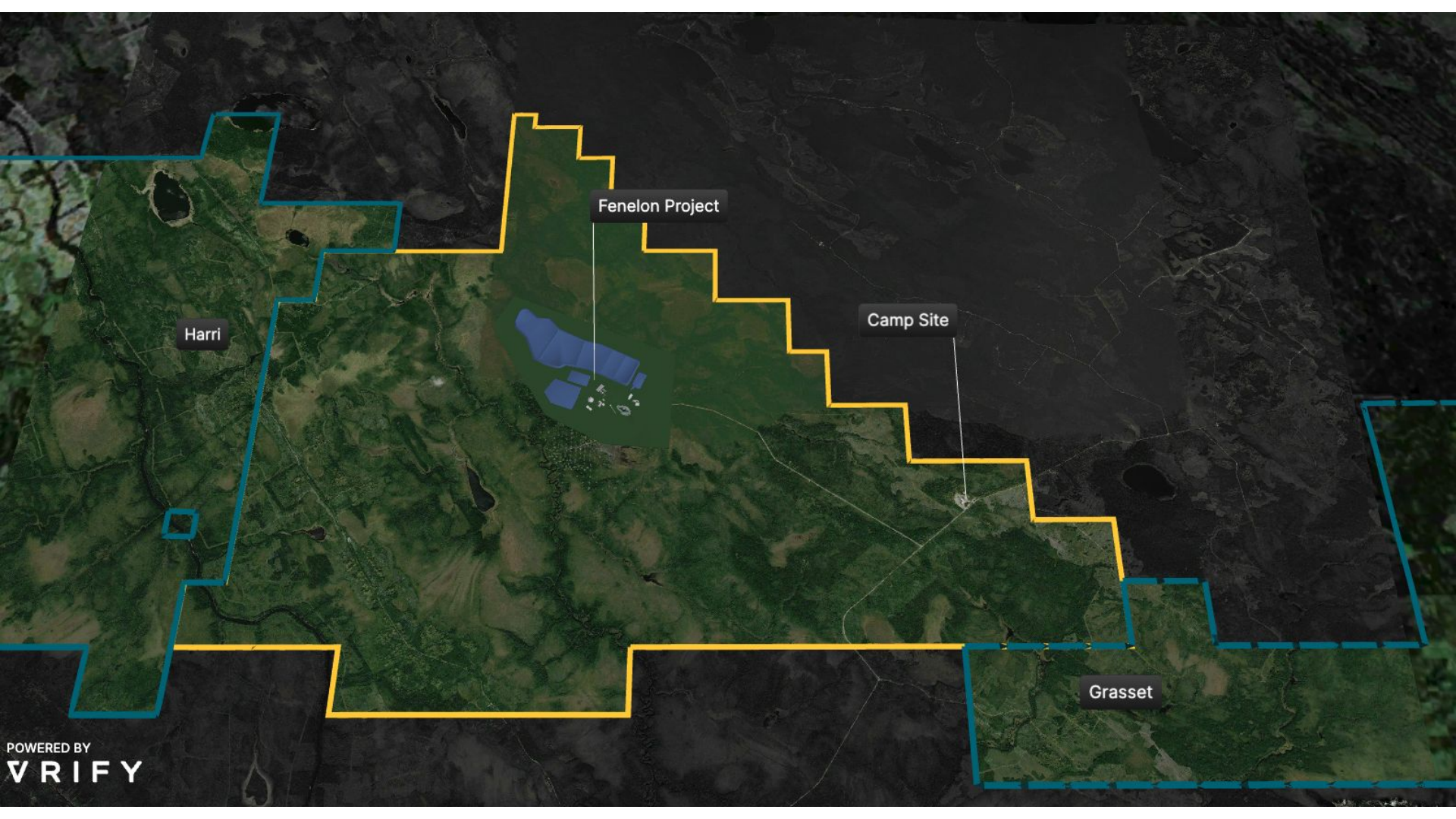
Martiniere Gold
2023 Mineral Resource Estimate
0.68 Moz Au Indicated
0.63 Moz Au Inferred

Fenelon Gold
2023 Mineral Resource Estimate
2.37 Moz Au Indicated
1.72 Moz Au Inferred

Harri

Beschefer

Grasset Gold



Fenelon Project

Camp Site

Harri

Grasset



Tailings Management Facility

Water Management Pond

Emergency Pond

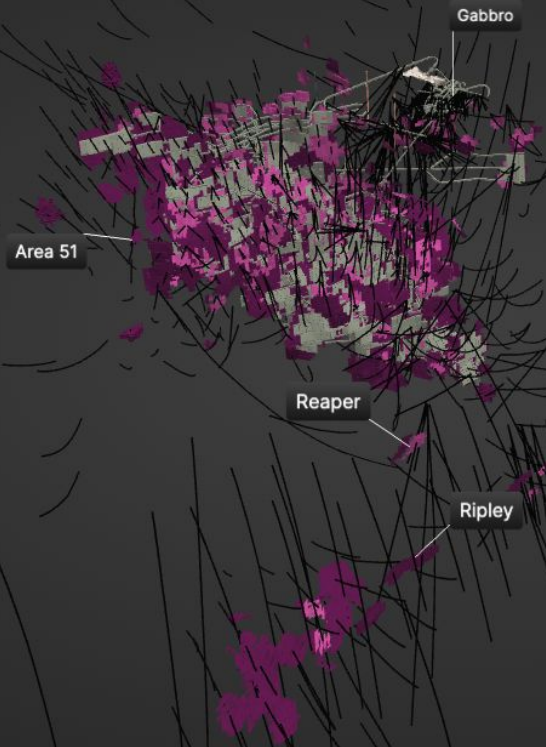
Processing Plant

Waste Pile

Truck Shop & Warehouse

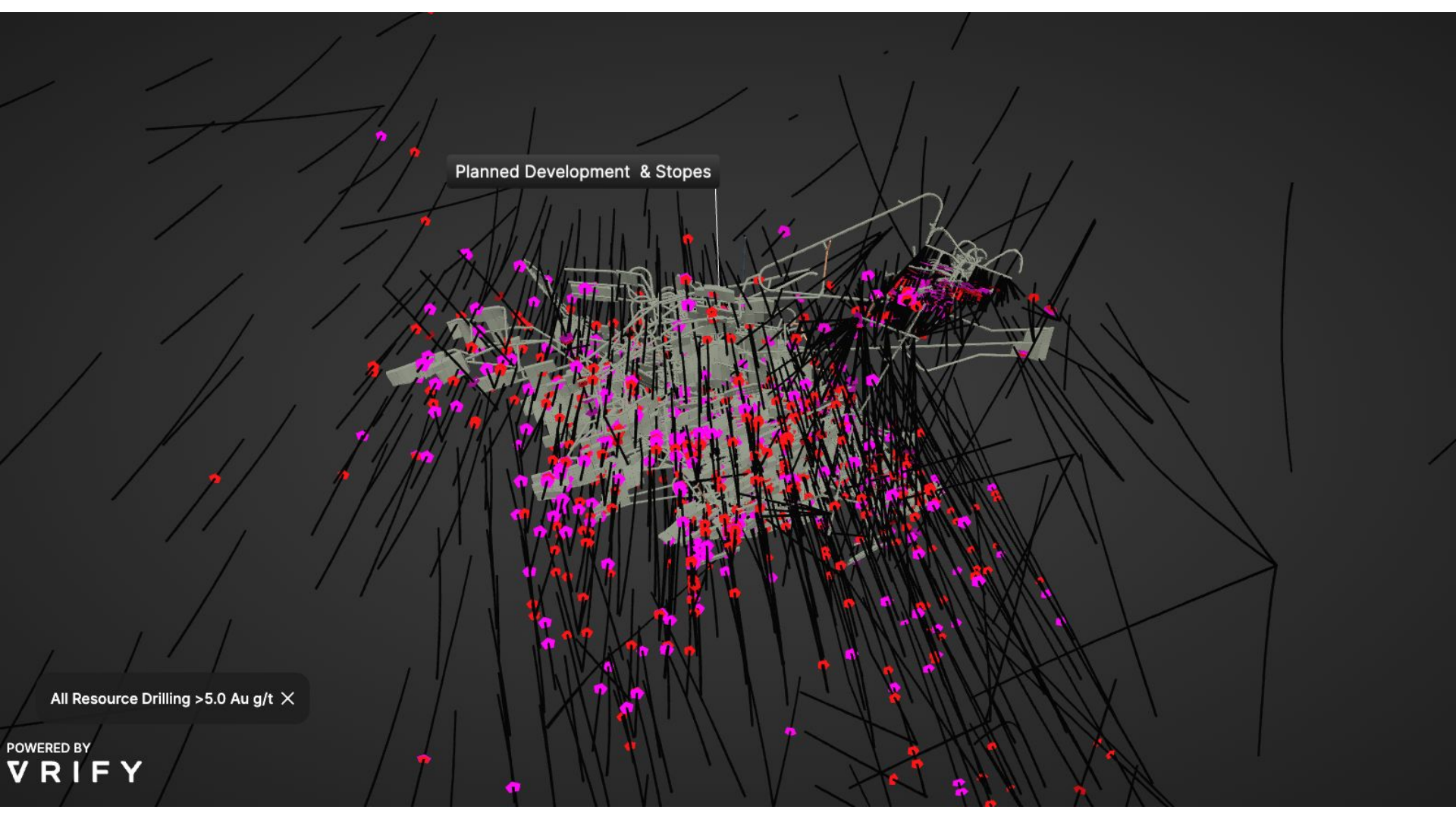
Gabbro Pit

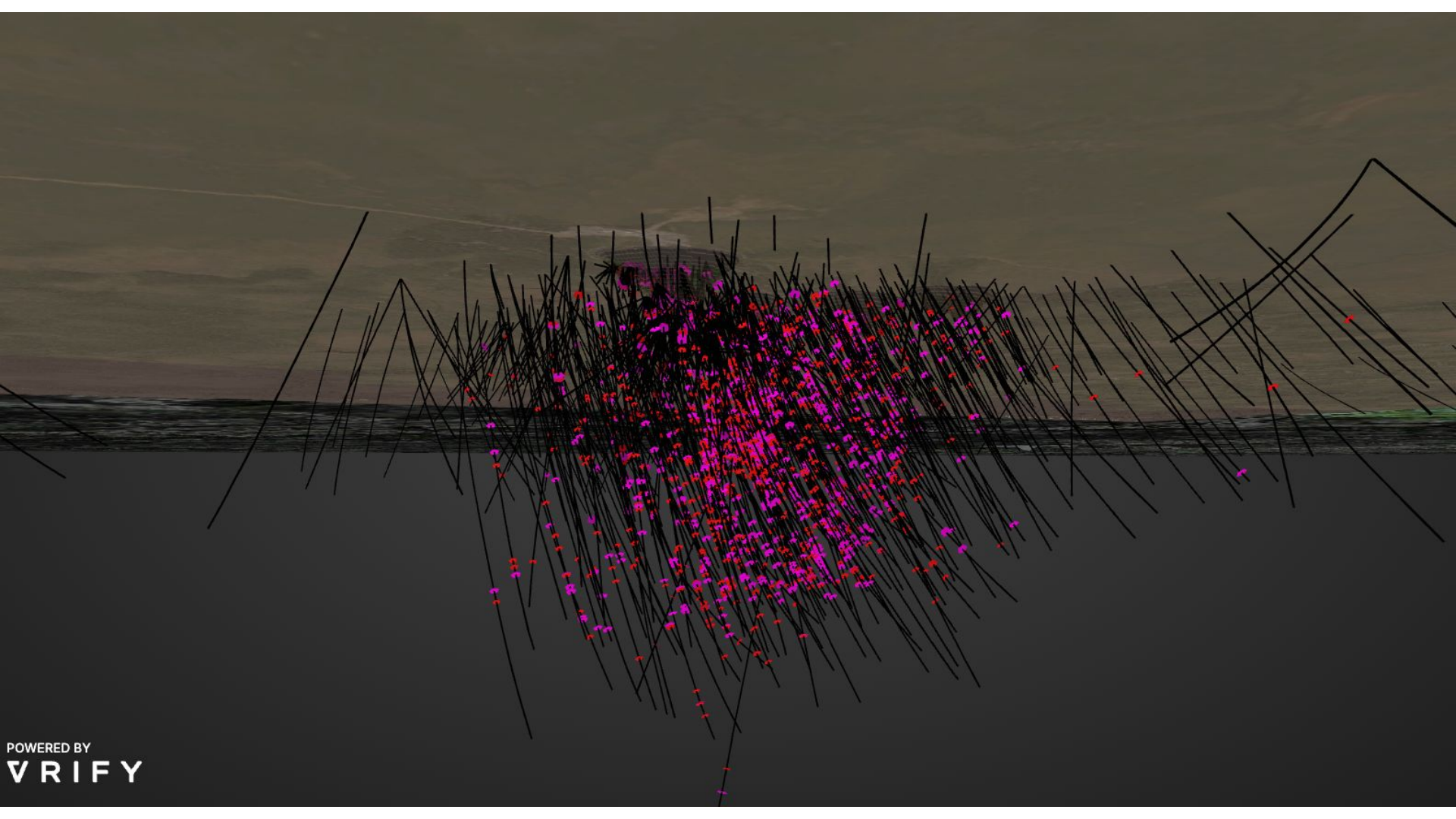
ing

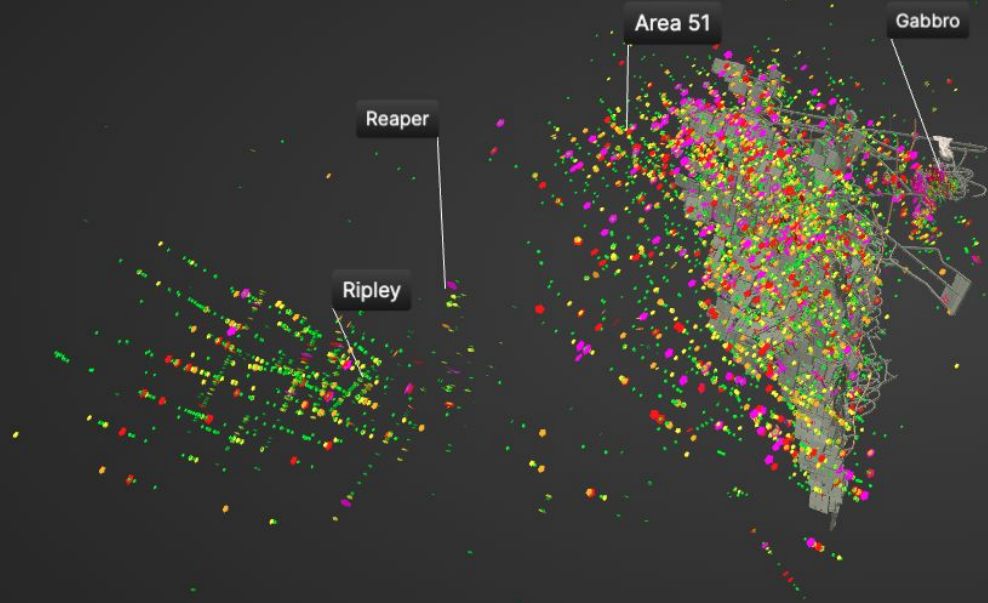


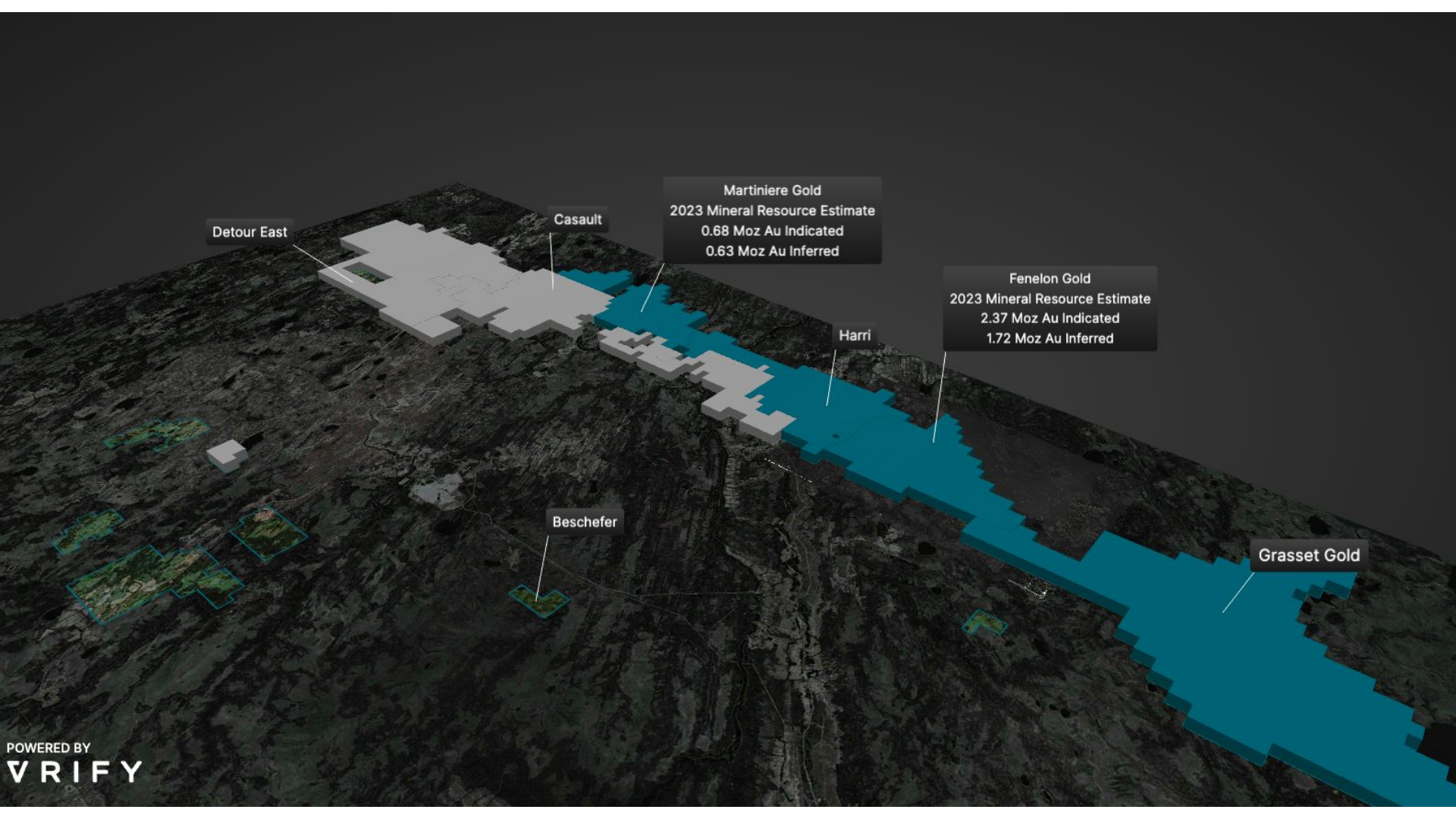
Planned Development & Stopes

All Resource Drilling >5.0 Au g/t ✕





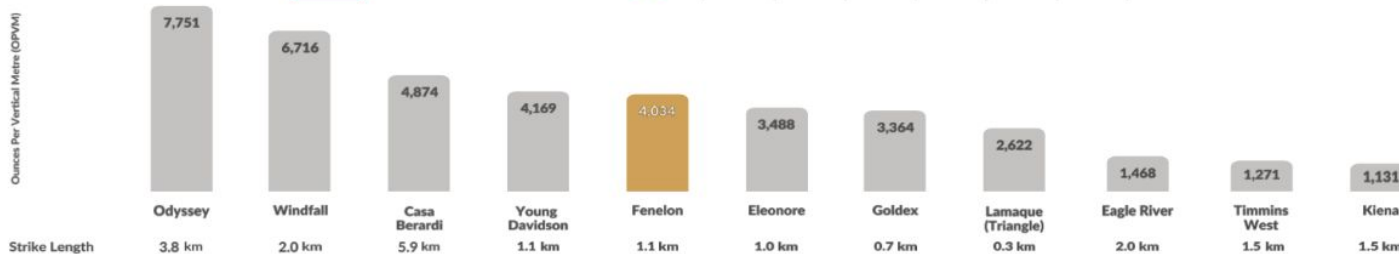
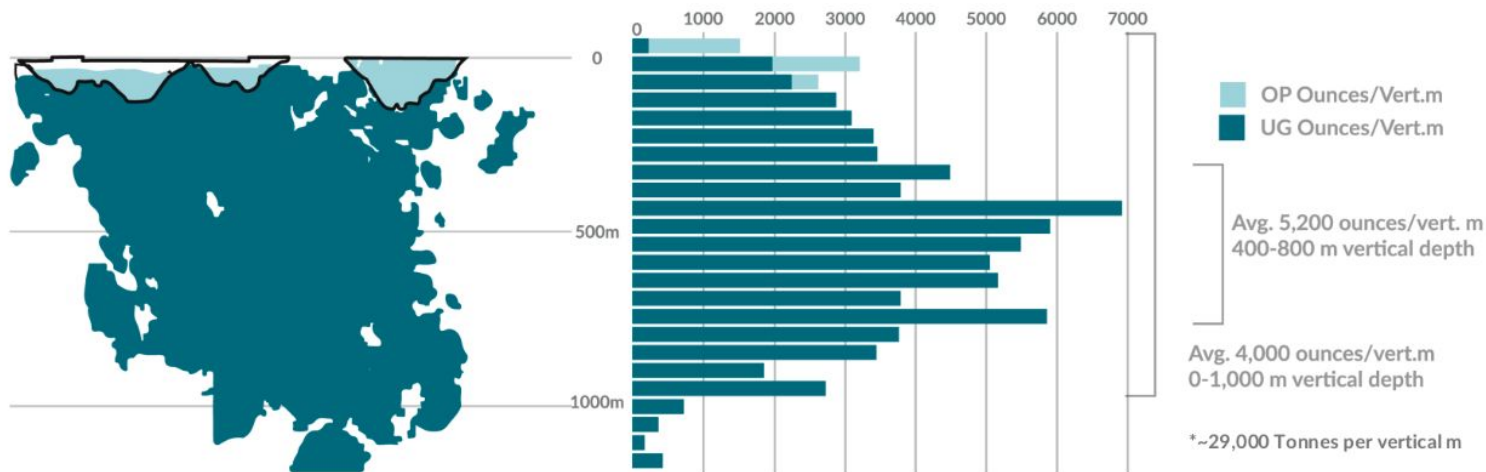




Fenelon Project vs Other Abitibi Gold Deposits



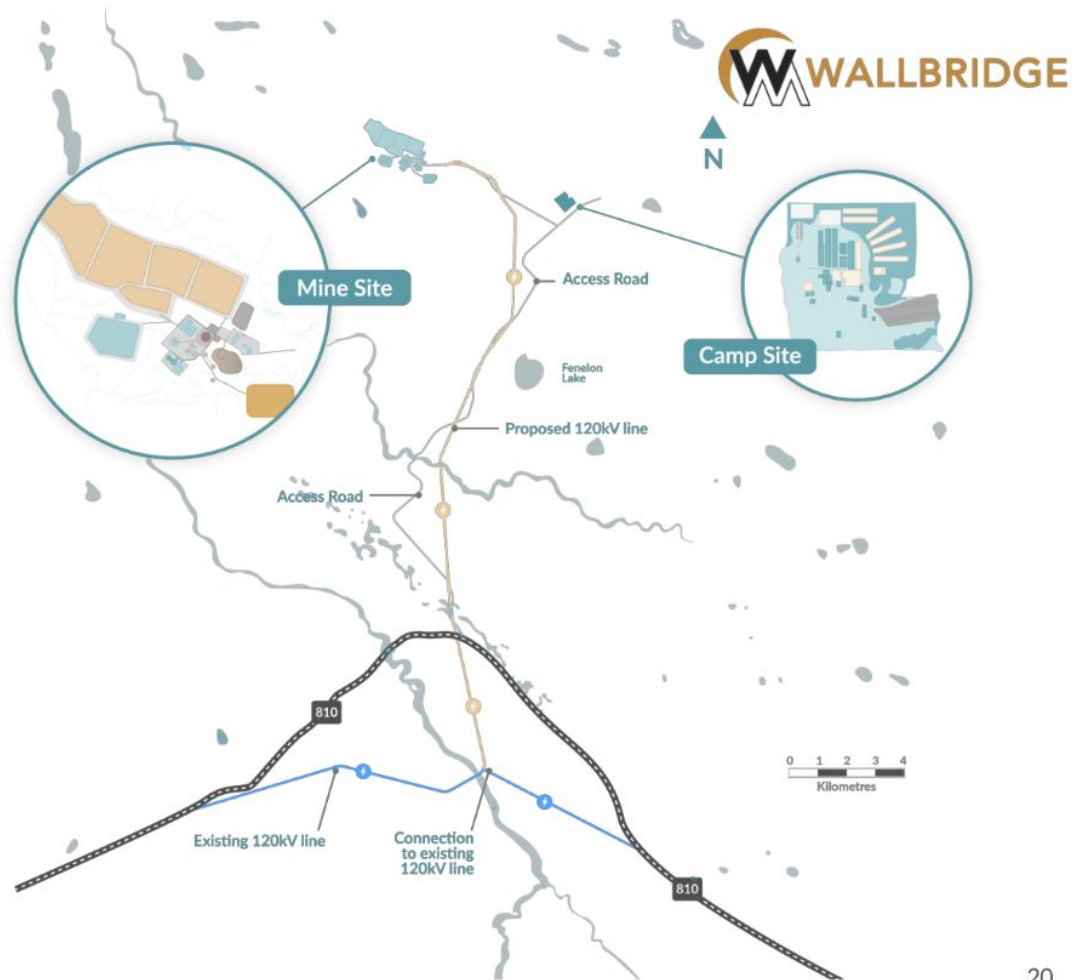
Gold Ounces Per Vertical Metre



Fenelon Gold PEA

Access To Infrastructure

Electric Line 120 Kv (25.3km)

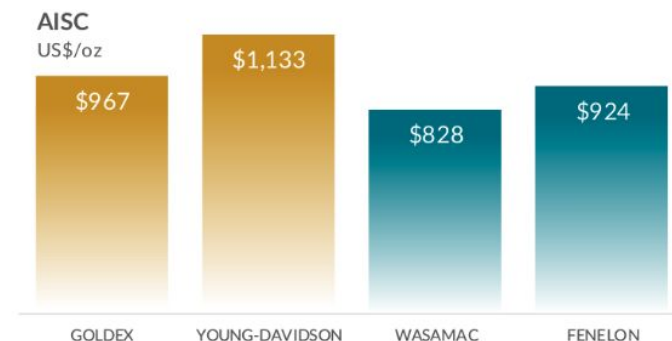
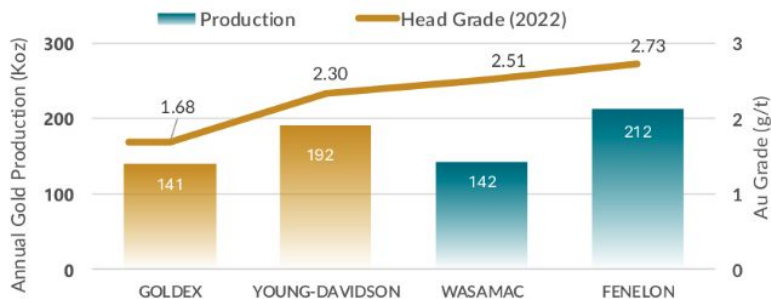


Fenelon Project Comparables



Similar Abitibi Gold Mining Operations

	GOLDEX	YOUNG-DAVIDSON	WASAMAC	FENELON
Company	Agnico Eagle Mines	Alamos	Agnico Eagle Mines	Wallbridge
Stage	Production/2008	Production/2012	Feasibility/2021	PEA/2023
Depth (metres)	800-1,500	210-1,500	0-845	0-1,040
Mineral Resource Estimate preceding construction decision	1.91 Moz @ 2.12 g/t	3.16 Moz @ 3.04 g/t	N/A	2.37 Moz @ 3.40 g/t Indicated 1.72 Moz @ 2.89 g/t Inferred
Reserves & Resources (YE 2023) (oz Au)	2P @ 998,000 oz	2P @ 3,394,000 oz	2P @ 2,170,000oz	I&I @ 2,715,000 PEA Indicated & Inferred Resource



For details of the 2023 MRE, please refer to Amended and Restated NI 43-101 Technical Report filed on December 29, 2023, on SEDAR+. For cautionary notes and definitions related to the 2023 PEA, please refer to page 2 of this presentation.

Martiniere Gold Project

Advancing Our Second Million-Ounce Gold Deposit



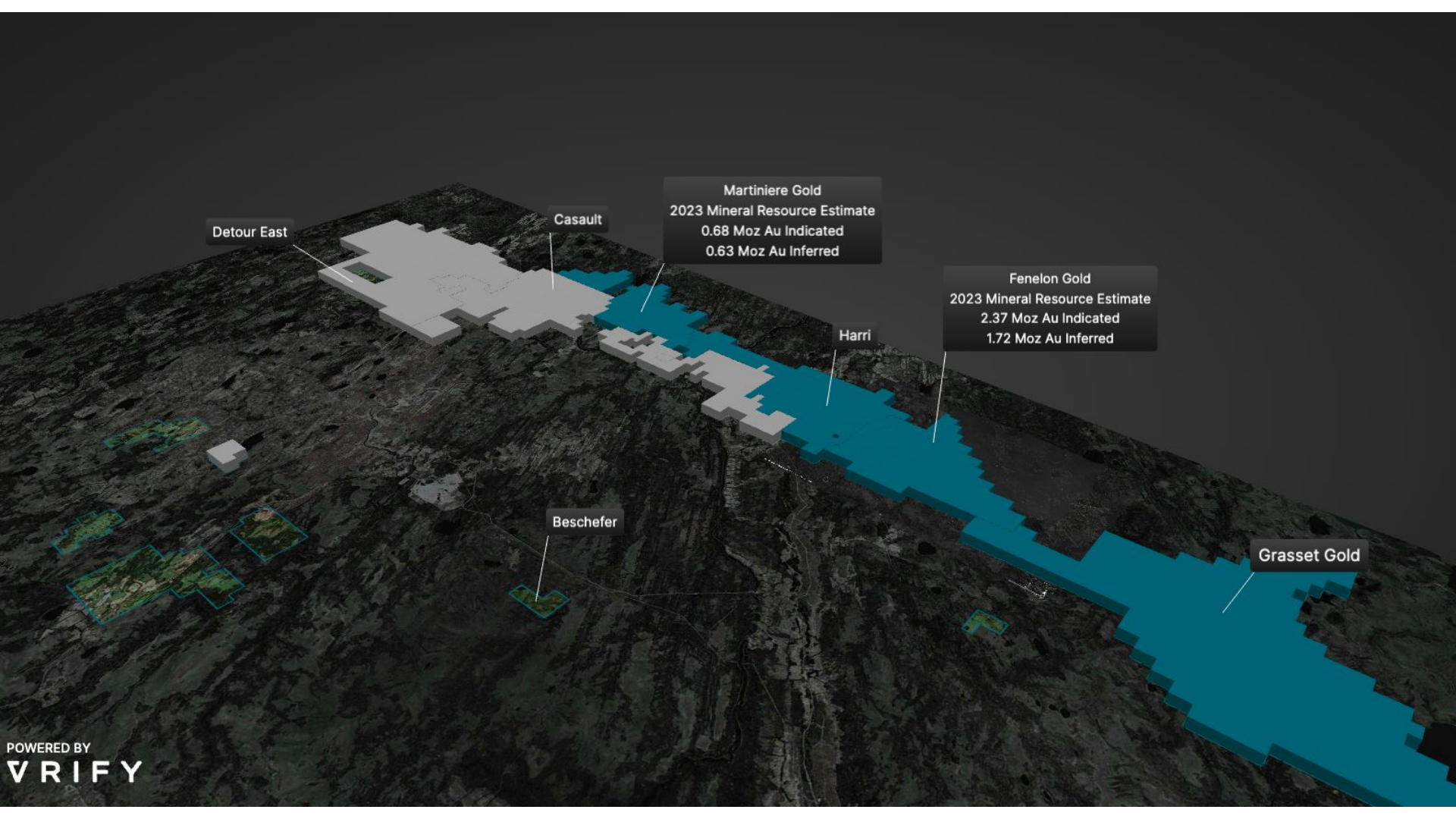
2023 MRE

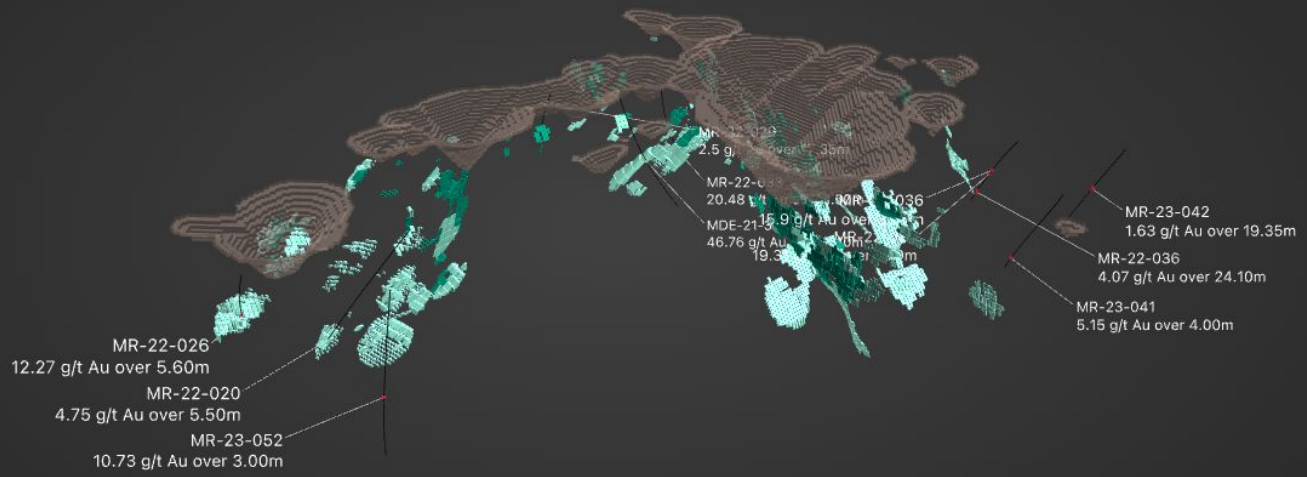
- Since the acquisition, expanded known resources by 16% in the Indicated and 1,100% in the inferred category
- Very limited drill testing below 400 m vertical depth

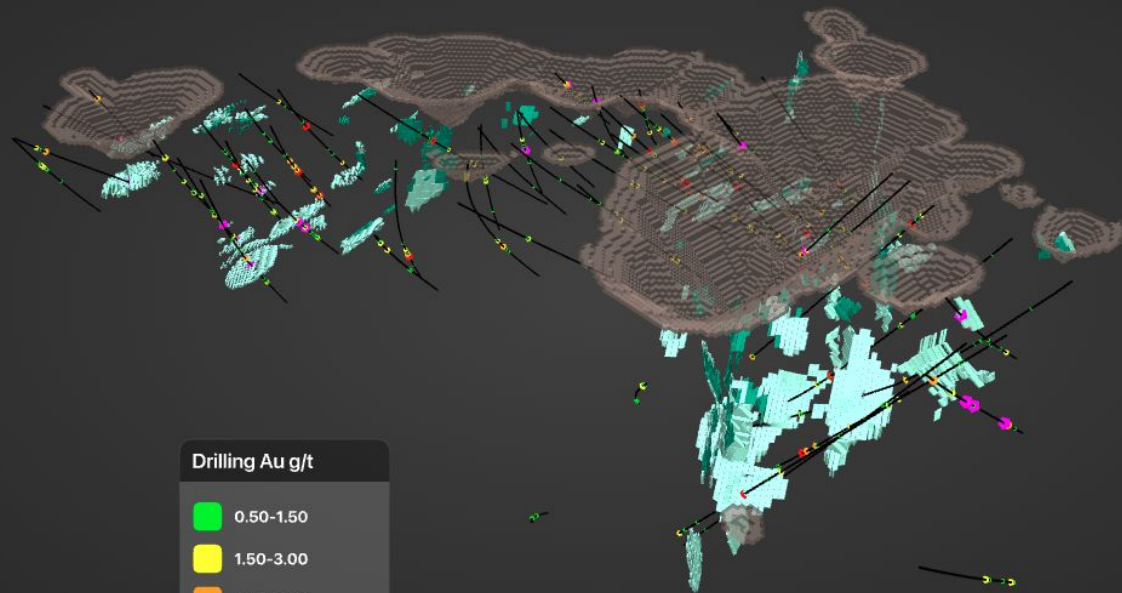
2024 Plans

- Resource drilling (~13,000 m) to expand resources near 2023 MRE
- Technical studies in support of a future PEA

Martiniere Gold Property		2023		
		Tonnes	Au g/t	Ounces
Open Pit	Indicated	7,757,700	2.14	534,100
	Inferred	2,652,400	1.83	156,400
Underground	Indicated	1,285,100	3.64	150,300
	Inferred	3,542,500	4.18	475,900
Total	Indicated	9,042,800	2.35	684,300
	Inferred	6,194,900	3.17	632,300







Wallbridge

A Platform for Growth in the Abitibi

Advancing multi-million-ounce
gold discoveries on a district-
scale land package



Fenelon: a Hub to Unlock Value for Shareholders

Investigating synergies between Fenelon and Martiniere
plus strong greenfields discovery potential



Growing Gold Resources

Fenelon 2023 PEA: After-tax NPV_{5%} of \$721 Million at US\$1750 gold



Strong Technical Team

Integrated exploration backed by a skilled team



Premier Location

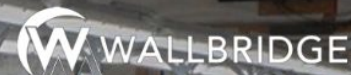
Established transportation, energy infrastructure and experienced
workforce in one of the world's leading mining jurisdictions



ESG Focused

Respecting shareholders, the environment and
communities where we operate

TSX: WM
OTCQX: WLBMF



Thank you

Contact
Information:

Brian Penny, CEO
E: bpenny@wallbridgemining.com

Victoria Vargas, Capital Markets Advisor
E: vvargas@wallbridgemining.com

 @WallbridgeWM

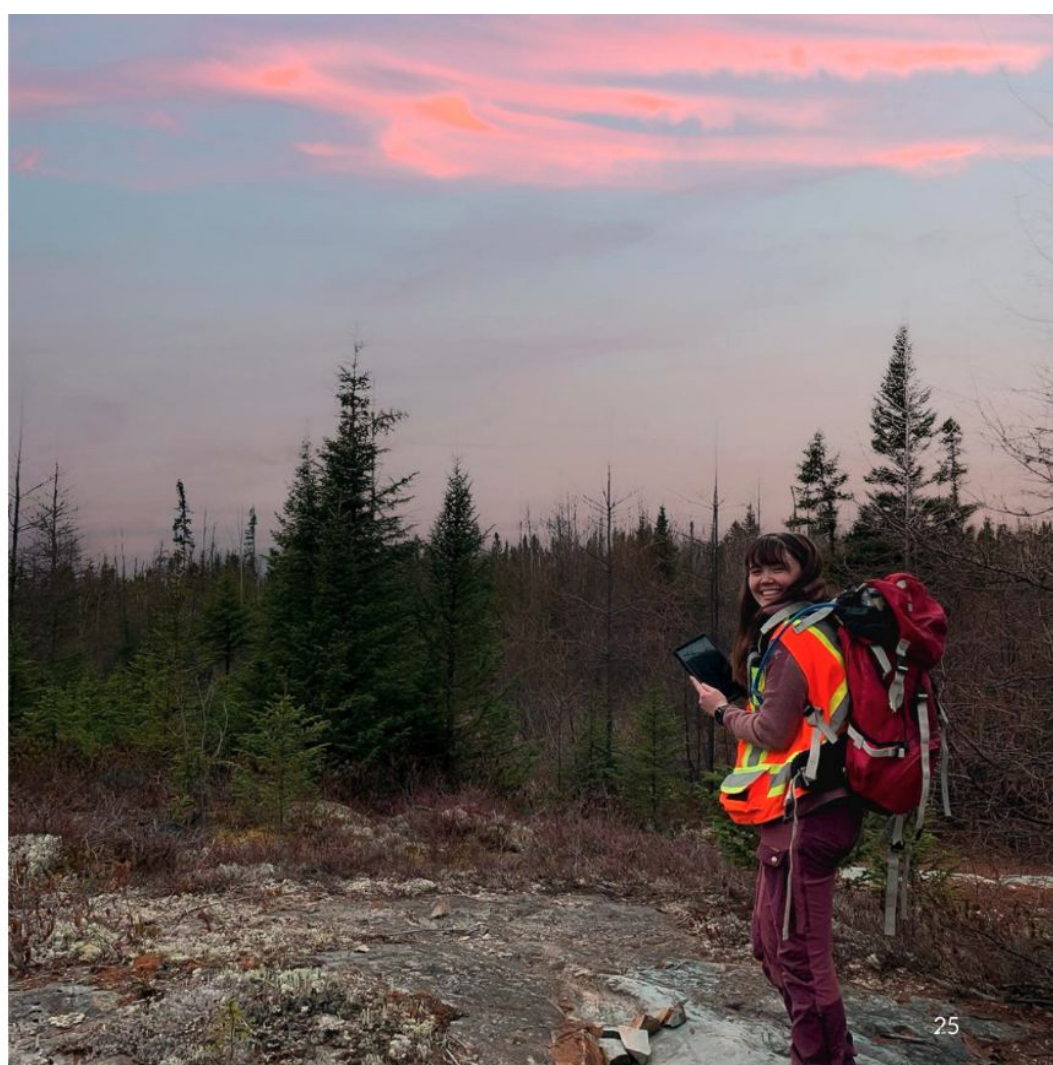
 @WallbridgeMining

 wallbridgemining.com

Appendix

Solid team in place for future growth along
the Detour-Fenelon Gold Trend

TSX: WM OTCQB: WLBMF



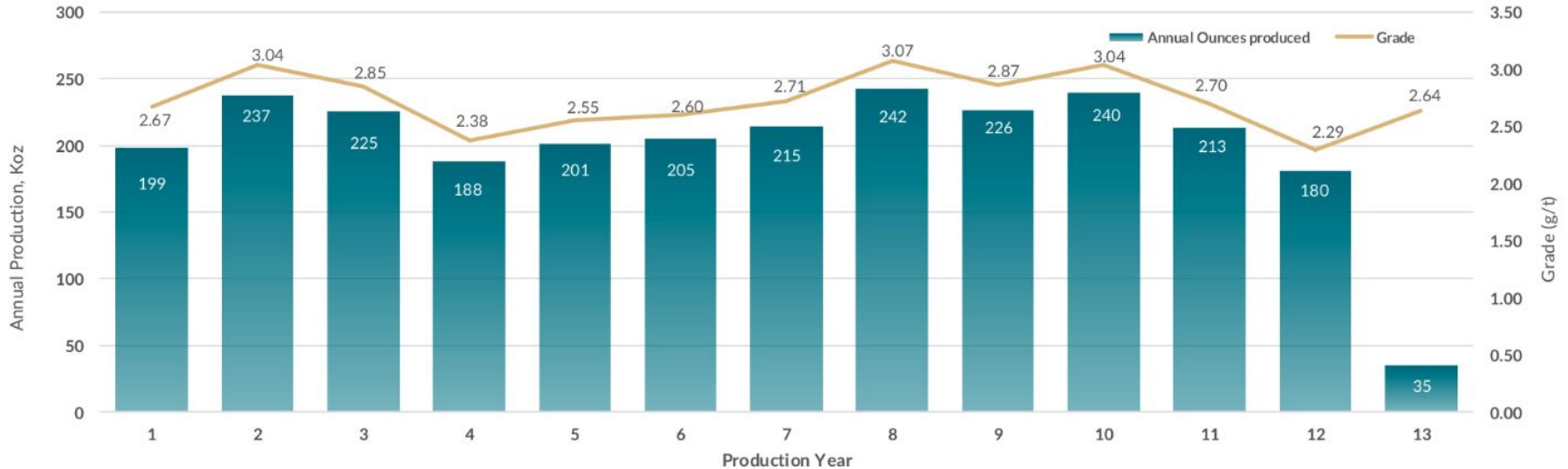
Fenelon PEA



Average Annual Gold Production Of 212,000 Ounces Per Year

Total Production of 2.6 Moz over 12-year mine life

Production Profile



For cautionary notes and definitions related to the 2023 PEA, please refer to page 2 of this presentation

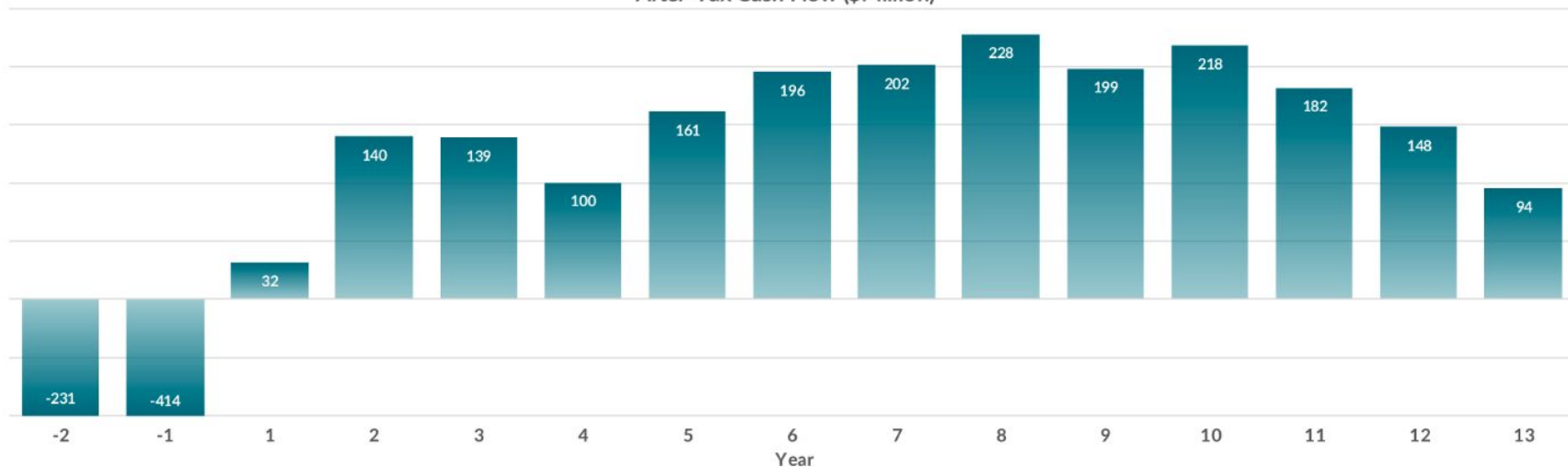
Fenelon PEA



Strong Free Cash Flow Generation Over 12-Year Mine Life

Average annual after-tax cash flow of \$157 million

After-Tax Cash Flow (\$Million)



For cautionary notes and definitions related to the 2023 PEA, please refer to page 2 of this presentation

Fenelon PEA Opportunities



Open In All Directions And Still Growing

Opportunity	Potential Benefits to:
Additional infill drilling at Fenelon	Increase the resource grade and ounces and convert more inferred to measured and indicated categories
Additional exploration drilling at Fenelon	Increase the mineral resources and extend mine life since the deposit is open in all directions
Additional technical studies (borrow pits, geotechnical investigation, hydrogeology, geochemical)	Improve project economics by reducing the capital requirements and operating costs
Additional geotechnical/rock mechanics	Reduce crown pillar thicknesses thus increasing overall ounces
Additional metallurgical studies, paste fill testing, and tailings testing	Lower project operating costs
Additional waste rock sampling	Identify clean waste rock to reduce site infrastructure costs
Additional drilling at Martiniere	Add organic production growth by increasing mineral resource and converting from inferred to measured and indicated categories
Additional exploration outside the current mineral resources	Identify new discoveries and add organic production growth considering the large, underexplored land package

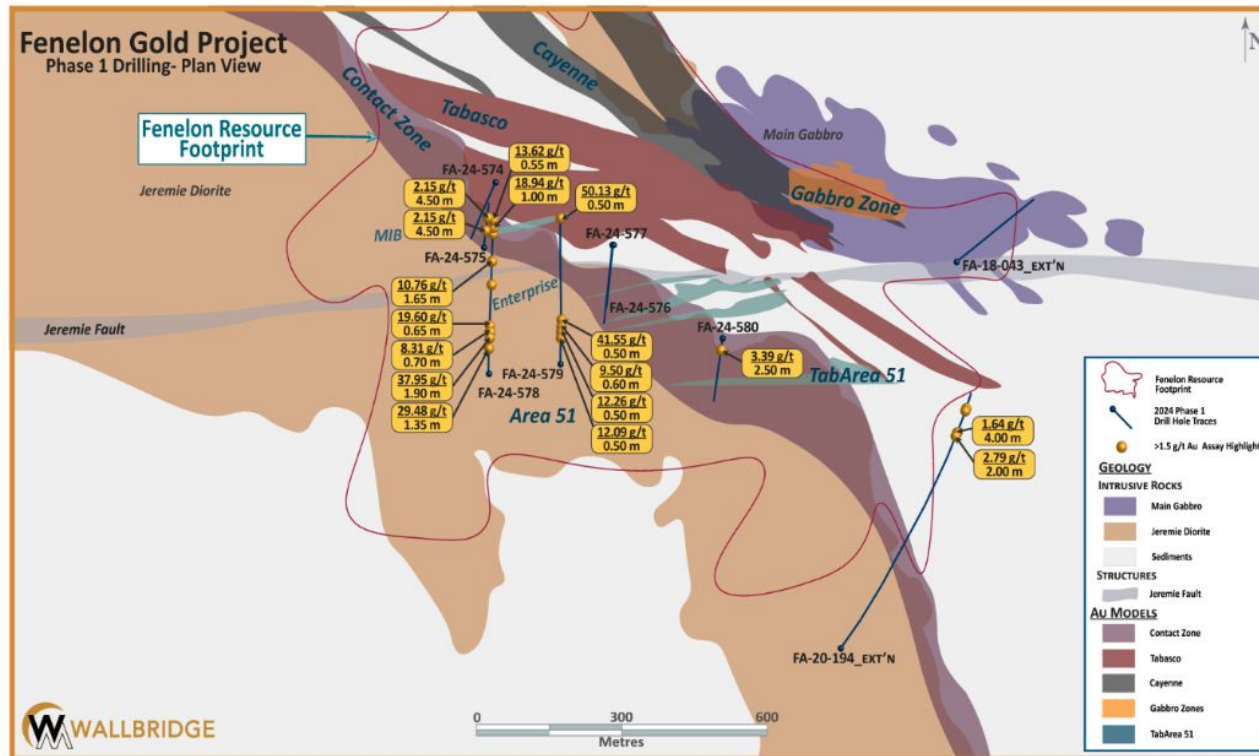
Fenelon First Half 2024 Exploration Advances

Fenelon Resource Delineation & Infill Drilling



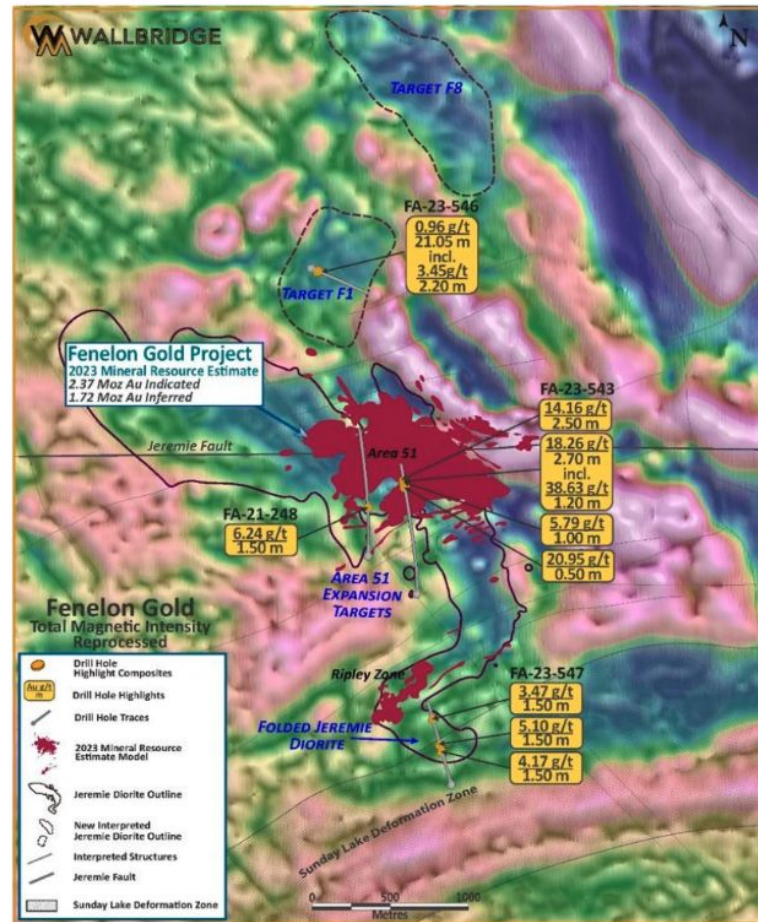
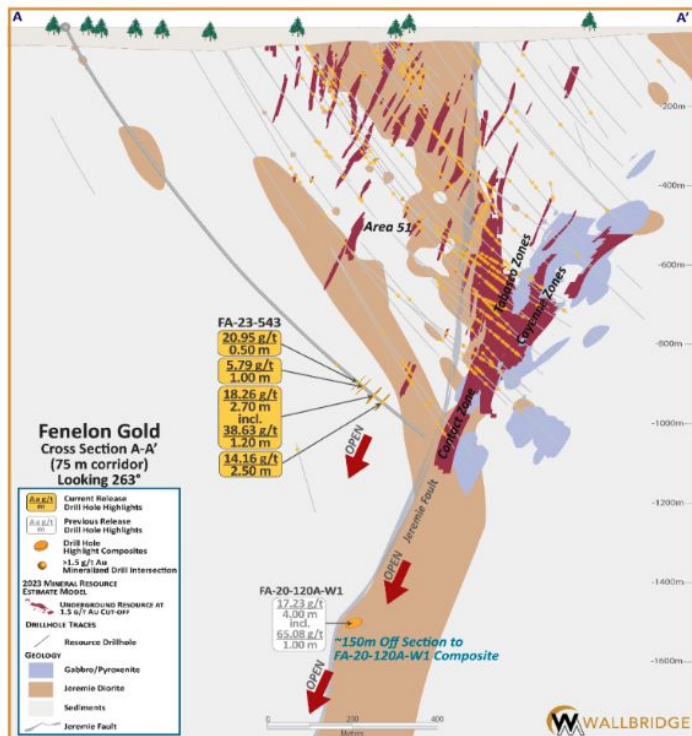
Program Highlights

- 9 holes totaling 2,400 metres targeting Area 51 Enterprise, Contact and Tabasco zones
- Multiple high-grade gold intercepts along Area 51 Enterprise zone at depths ranging from 40 to 150 metres below surface
- Achieved further confirmation of gold grade continuity along Contact and Tabasco zones
- Extended Contact and Tabasco zone gold mineralization beyond eastern limits of the 2023 MRE



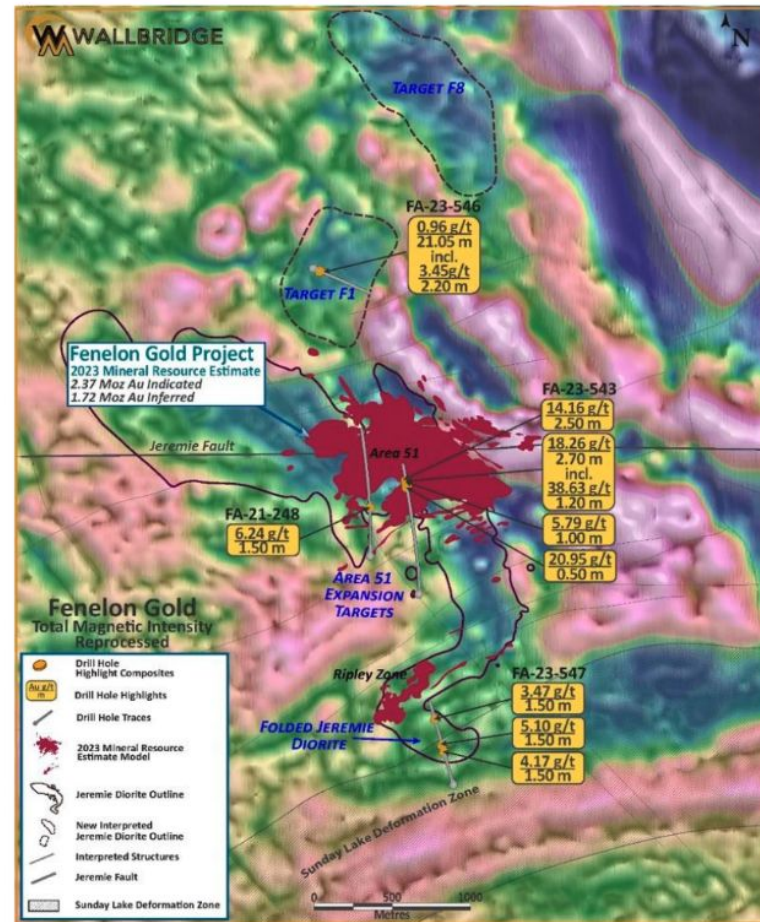
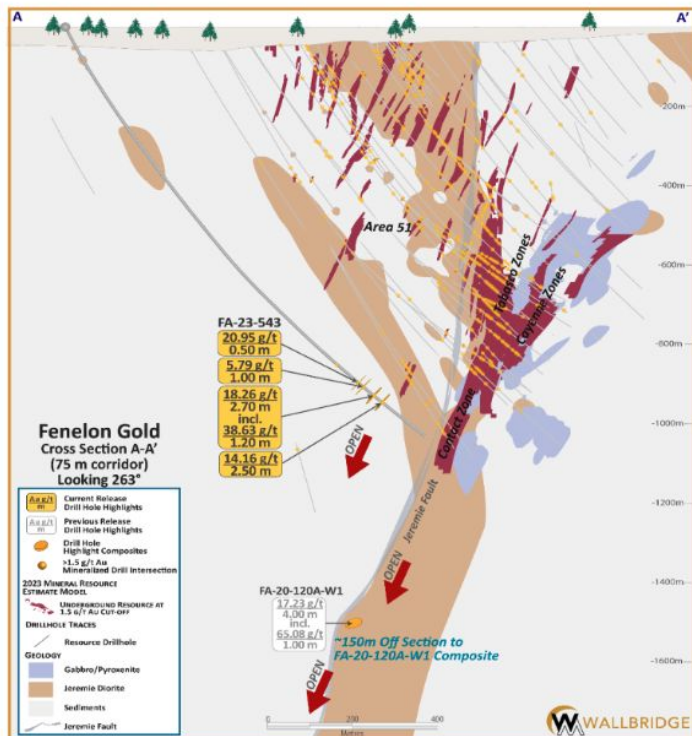
2023 Exploration Advances

New Gold-Bearing Jeremie Diorite and Extensions of Known Zones At Fenelon



2023 Exploration Advances

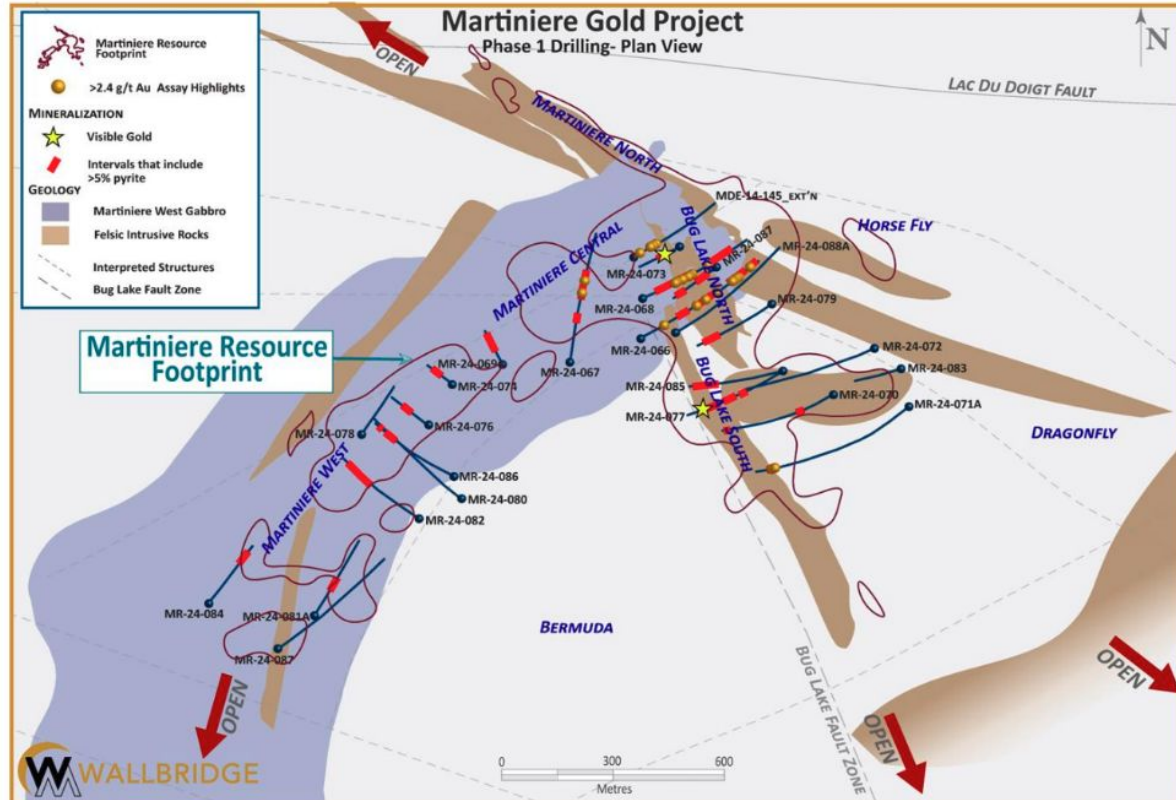
New Gold-Bearing Jeremie Diorite and Extensions of Known Zones At Fenelon



Martiniere Q1-Q2 2024 Exploration Advances



Martiniere Technical Studies | Metallurgical & Geotechnical Drilling

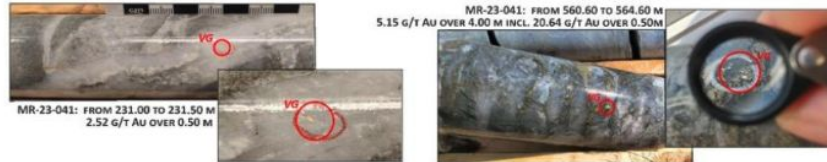
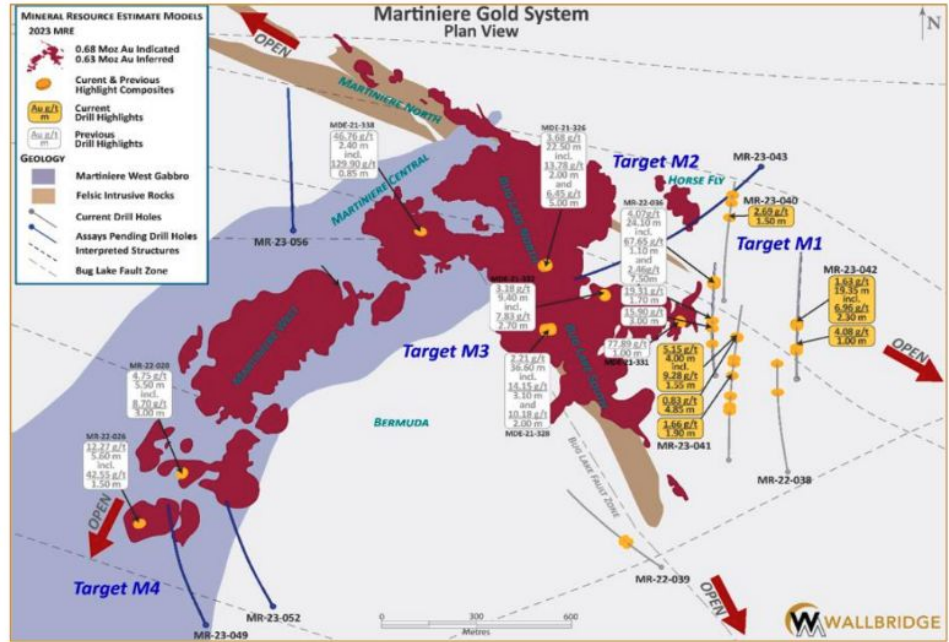
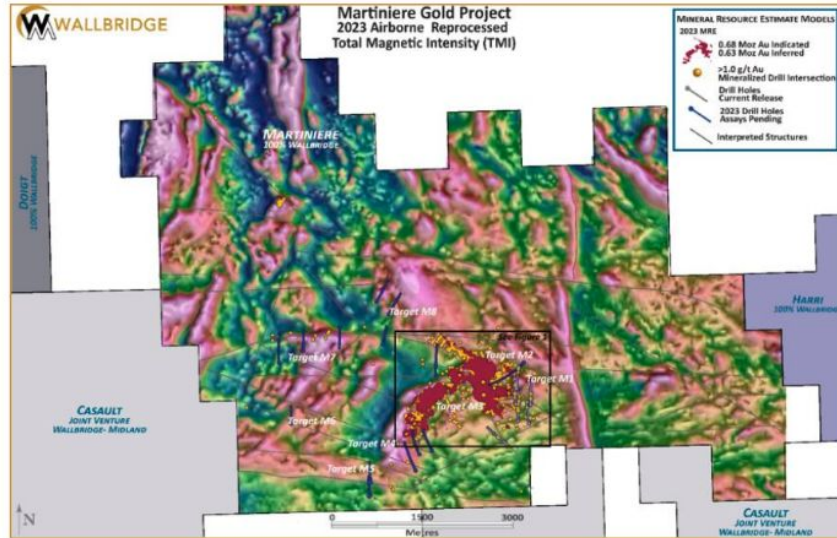


Program Highlights

- 27 holes totaling 8,439 metres targeting Martiniere West, Central and North, Bug Lake zones
- Drilling provides representative coverage for metallurgical and geotechnical characterization of currently defined mineral resource
- Strong sulfide (\pm gold) mineralization intercepted in majority of holes - *Final assays pending*
- Geologic modeling is in progress to support ongoing technical studies for combined Fenelon – Martiniere PEA

2023 Exploration Drilling

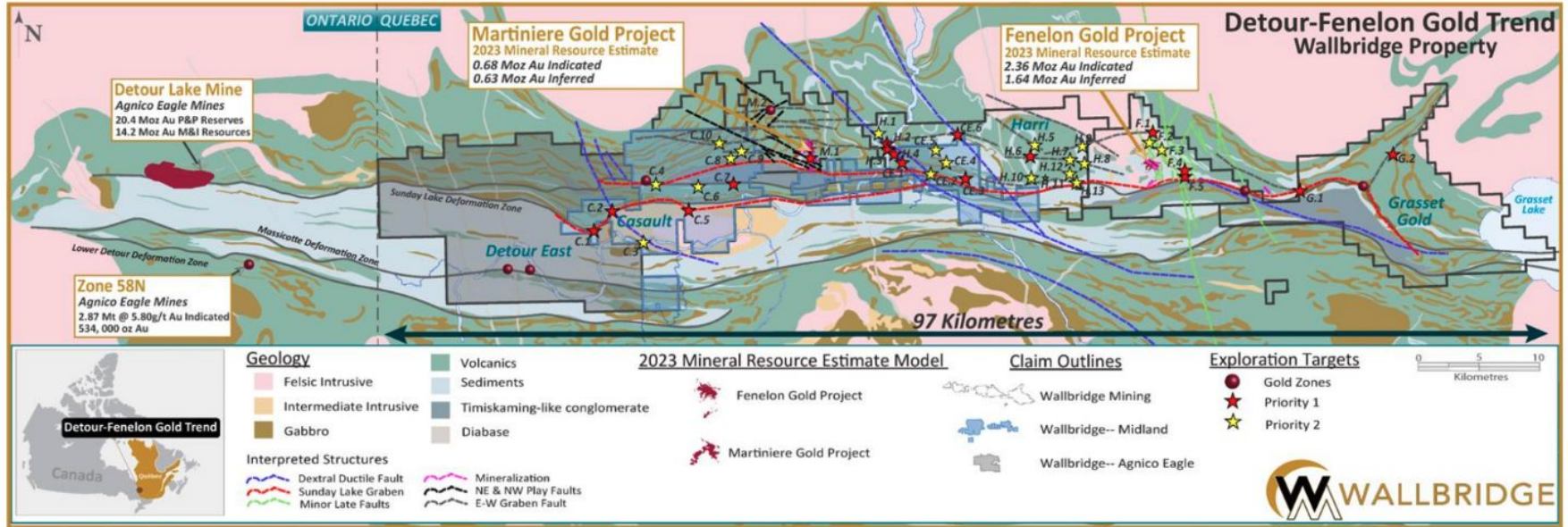
Martiniere Step-out Drilling



Significant Untested Discovery Potential



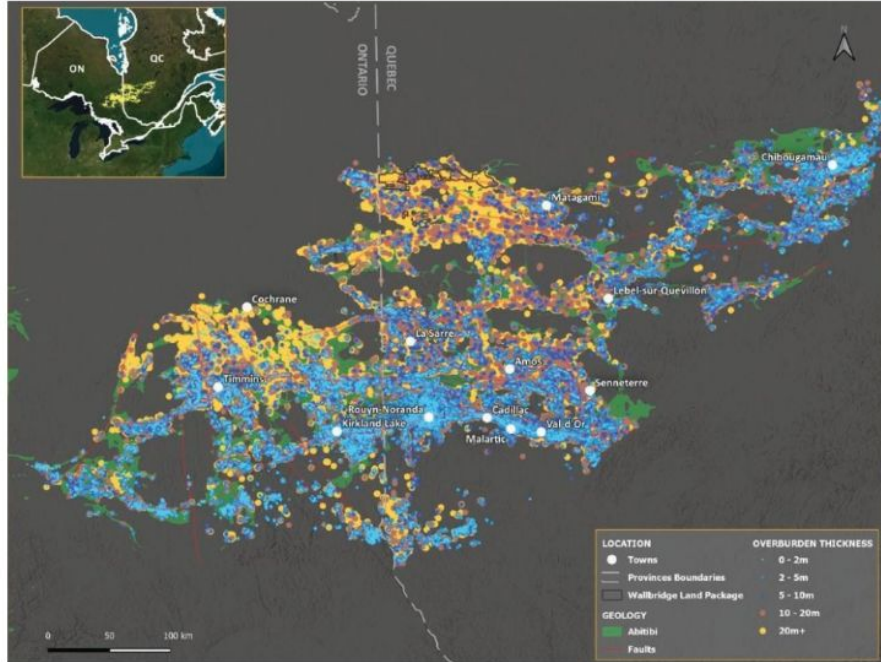
Detour – Fenelon Gold Trend: One of the Abitibi's least explored gold belts



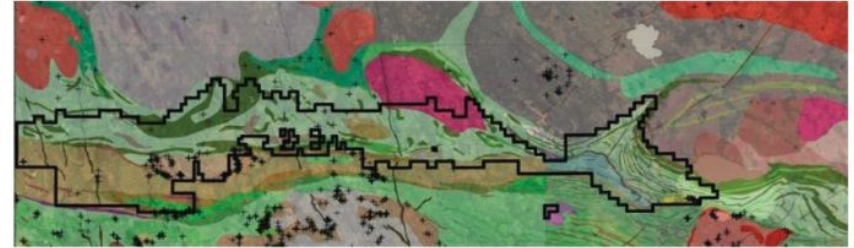
- Host to Agnico Eagle's Detour Lake Gold Mine (2P @ 19.9 Moz + M&I @ 17.6 Moz @ Dec 31'23), Canada's largest producing gold mine
- Wallbridge controls 830 sq km consolidated mineral rights covering 97 km of prospective ground as trend extends to east into northern Quebec
- WM assets include Fenelon (PEA stage) and Martiniere (resource stage) projects plus large portfolio of regional greenfields exploration targets

Abitibi Greenstone Belt

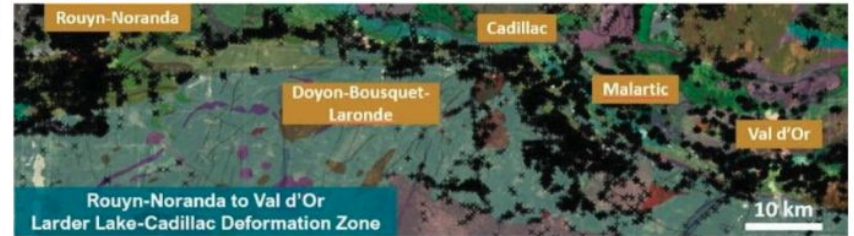
Overburden Thickness



- Northwestern Abitibi covered with deep overburden, hindering past exploration efforts

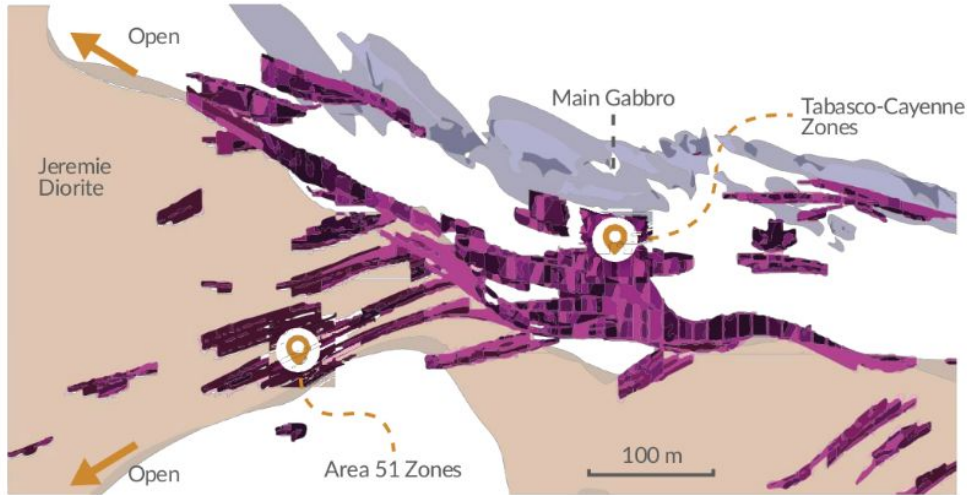


- Discovered: 1994-1997
- +5M oz Au known endowment on Quebec side (Wallbridge land package); 40 Moz at Detour Lake
- Very few outcrops



- Discovered: 1906-1911
- +100M oz Au known endowment
- Outcropping gold mineralization

Why Underground Bulk Mining?



Tabasco-Cayenne Zones

Plan view, 600 m depth

- Excellent along strike and down-dip continuity along diorite contact
- Multiple zones within a mineralized corridor tens of metres in width, controlled by shearing and stratigraphy
- Amenable to transverse mining
- Characteristic wide drill hole intersections:
 - 4.84 g/t Au over 56.00 metres (FA-20-128)
 - 4.06 g/t Au over 51.70 metres (FA-20-134)
 - 3.48 g/t Au over 54.00 metres (FA-20-197)
 - 4.31 g/t Au over 32.50 metres (FA-19-096)
 - 3.71 g/t Au over 42.50 metres (FA-20-203)



Area 51 Zones

Plan view, 475 m depth

- Good continuity and concentration of veins/shear zone network hosted by Jeremie Diorite
- Amenable to long-hole stopping or transverse mining
- Characteristic drillhole intersections:
 - 2.06 g/t Au over 38.50 metres (FA-20-115)
 - 1.93 g/t Au over 13.50 metres (FA-21-264A)
 - 1.70 g/t Au over 58.50 metres (FA-20-116)
 - 2.25 g/t Au over 19.65 metres (FA-20-191)
 - 3.28 g/t Au over 17.60 metres (FA-19-059)

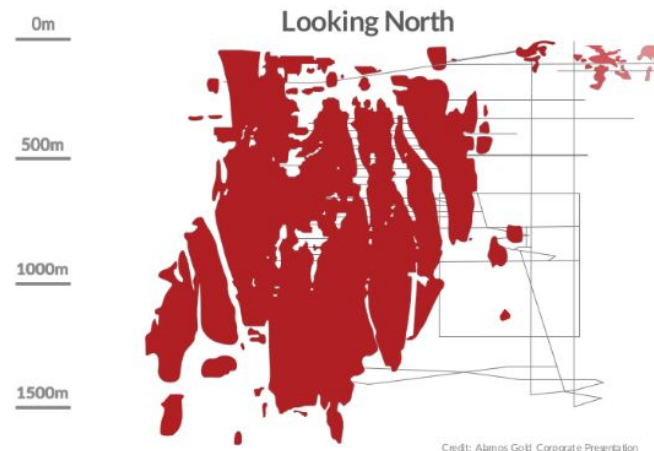
2023 Mineral Resource Update

Fenelon Gold Project – Bulk Mineable



Fenelon Underground

- 21.67M tonnes @3.40 g/t - 2.37M Oz Indicated*
- 18.48M tonnes@ 2.89 g/t - 1.72M Oz Inferred*
- Cut-off grade calculated at 1.5 g/t
- Resource to ~1,000m deep
- Gold ounces-per-vertical metres (avg. 4,000)
- Open in all directions
- 212,000 oz/yr, 7,000 tonnes per day (2023 PEA¹)
- US\$924/oz AISC (2023 PEA)



Credit: Alamos Gold Corporate Presentation

Alamos Gold's Young Davidson

- Mineral Resource preceding production of 3.16 Moz@ 3.04 g/t
- Cut-off grade calculated at 1.5 g/t
- 1,500m to 1,800m deep
- Production grade of 2.34 g/t
- 200,000 oz/yr production (~8,000 tonnes per day)
- US\$1,133/oz AISC

For details of the 2023 MRE, please refer to Amended and Restated NI 43-101 Technical Report filed on December 29, 2023, on SEDAR+. For cautionary notes and definitions related to the 2023 PEA, please refer to page 2 of this presentation

Fenelon PEA

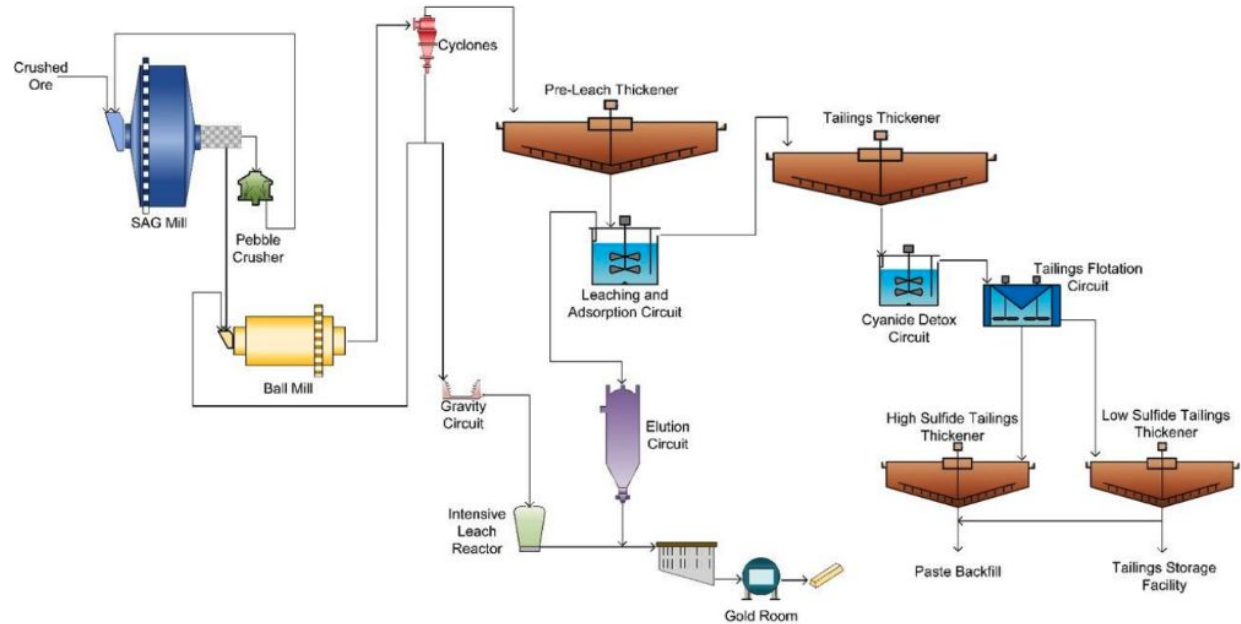
Metallurgy & Processing, A Simple Flowsheet

Metallurgy

- **Metallurgical Testing:**
 - Testing representative Tabasco-Cayenne & Area 51 material
- **Gravity Gold Recoveries**
 - up to 66.5% for Tabasco/Cayenne
 - up to 84.3% for Area 51
- **Cyanidation and flotation testing**
- **Overall Gold Recovery: 96%**

Processing

- **A simple flowsheet**
 - Gravity, CIL, Elution, Gold Room
 - Flotation on detox residue to produce desulfurized tailings



Our Team



Diverse and Complementary Backgrounds

Board



ANTHONY MAKUCH
Director, Chairman



BRIAN PENNY
CEO



BRIAN CHRISTIE
Director



DANIELLE GIOVENAZZO
Director



JEFFERY SNOW
Director



MICHAEL PESNER
Director



JANET WILKISON
Director

Management



BRIAN PENNY
CEO



MARY MONTGOMERY
CFO



MARK PETERSEN
Geological Consultant



SEAN STOKES
Corporate Secretary



FRANCOIS CHABOT
Technical Studies
Manager



CAROL DUFFIELD
Director HR



VICTORIA VARGAS
Capital Markets Advisor

Fenelon PEA-Study Team



An Assembly of Expertise

Consulting Firms	Area of Responsibility	Qualified Person
InnovExplo Inc.	– Mineral Resources	– Carl Pelletier, P.Geo., – Vincent Nadeau-Benoit, P.Geo., – Simon Boudreau, P.Eng., – Marc R, Beauvais, P.Eng.
InnovExplo Inc.	– Mine design and scheduling, mine capital, and operating costs; G&A cost estimates and financial analysis	– Marc R, Beauvais, P.Eng.
G-Mining Services	– Metallurgy, processing plant design, capital, and operating cost estimates	– Martin Houde, P. Eng.
BBA Inc.	– Tailings management site design, capital, and operating costs; and reclamation costs.	– Luciano Piciacchia, P.Eng., Ph.D. – Mélanie Turgeon, P.Eng.
WSP	– Infrastructure & material handling, and capital cost estimate. – Rock mass classification, and stope design. – Environment	– Jonathan Cloutier, P.Eng. – André Harvey, Eng. – Nathalie Fortin, P.Eng., M.Env.
Responsible Mining Solutions Corp.	– Paste plant design, capital, and operating costs.	– Roberge, Jean-Louis, Eng.
ASDR Canada Inc.	– Water treatment plant design, capital, and operating costs. – UG dewatering design, capital, and operating costs.	– Dan Chen, P. Eng. – Martin Lessard, Eng.
Hydro-Resources Inc.	– Mine hydrogeology and site hydrology.	– Michael Verreault, Eng., M.Sc. A.

2023 Mineral Resource Estimate



Gold Price Sensitivity Analysis – Fenelon

Fenelon (All Zones)								
Gold Price (US\$/oz)	Cut-off Grade (gt/Au)	Tonnes (t)	Grade (g/t Au)	Troy Ounces (oz Au)	Cut-off Grade (g/t Au)	Tonnes (t)	Grade (g/t Au)	Troy Ounces (oz Au)
Indicated Resources								
1,920	In Pit > 0.35	817,500	4.06	106,600	UG > 1.25	25,433,700	3.00	2,457,100
1,760	In Pit > 0.40	774,800	4.24	105,700	UG > 1.35	23,530,400	3.15	2,380,300
1,600	In Pit > 0.45	727,400	4.46	104,400	UG > 1.50	20,931,700	3.37	2,265,200
1,440	In Pit > 0.50	530,200	5.27	89,900	UG > 1.70	18,188,100	3.65	2,136,600
1,280	In Pit > 0.55	476,000	5.60	85,800	UG > 1.90	15,890,500	3.93	2,009,900
Inferred Resources								
1,920	In Pit > 0.35	334,100	3.75	40,200	UG > 1.25	23,609,500	2.52	1,911,600
1,760	In Pit > 0.40	316,500	3.93	40,000	UG > 1.35	21,207,500	2.66	1,813,400
1,600	In Pit > 0.45	303,900	4.08	39,800	UG > 1.50	18,181,400	2.87	1,678,500
1,440	In Pit > 0.50	161,900	5.10	26,500	UG > 1.70	15,016,500	3.16	1,524,300
1,280	In Pit > 0.55	144,300	5.40	25,000	UG > 1.90	12,512,600	3.44	1,383,500

2023 Mineral Resource Estimate



Gold Price Sensitivity Analysis – Martiniere

MARTINIÈRE (All Zones)								
Gold Price (US\$/oz)	Cut-off Grade (gt/Au)	Tonnes (t)	Grade (g/t Au)	Troy Ounces (oz Au)	Cut-off Grade (g/t Au)	Tonnes (t)	Grade (g/t Au)	Troy Ounces (oz Au)
Indicated Resources								
1,920	In Pit > 0.45	11,912,200	1.87	715,400	UG (LH) > 2.00 UG (C&F) > 2.15	1,303,200	3.21	134,600
1,760	In Pit > 0.50	9,741,100	1.99	622,100	UG (LH) > 2.20 UG (C&F) > 2.35	1,378,900	3.41	151,100
1,600	In Pit > 0.55	7,757,700	2.14	534,100	UG (LH) > 2.40 UG (C&F) > 2.60	1,285,100	3.64	150,300
1,440	In Pit > 0.60	6,569,100	2.24	472,100	UG (LH) > 2.70 UG (C&F) > 2.90	1,188,300	4.08	155,800
1,280	In Pit > 0.65	5,546,900	2.38	424,700	UG (LH) > 3.05 UG (C&F) > 3.30	944,900	4.38	133,100
Inferred Resources								
1,920	In Pit > 0.45	5,456,700	1.57	275,900	UG (LH) > 2.00 UG (C&F) > 2.15	4,650,100	3.58	535,800
1,760	In Pit > 0.50	3,507,500	1.66	187,700	UG (LH) > 2.20 UG (C&F) > 2.35	4,140,700	3.94	524,400
1,600	In Pit > 0.55	2,652,400	1.83	156,400	UG (LH) > 2.40 UG (C&F) > 2.60	3,542,500	4.18	475,900
1,440	In Pit > 0.60	1,885,200	1.97	119,400	UG (LH) > 2.70 UG (C&F) > 2.90	2,978,100	4.69	449,400
1,280	In Pit > 0.65	1,316,100	2.13	90,200	UG (LH) > 3.05 UG (C&F) > 3.30	2,359,500	5.24	397,600

Our People

Our #1 Asset



Tailings Management Facility

Waste Pile

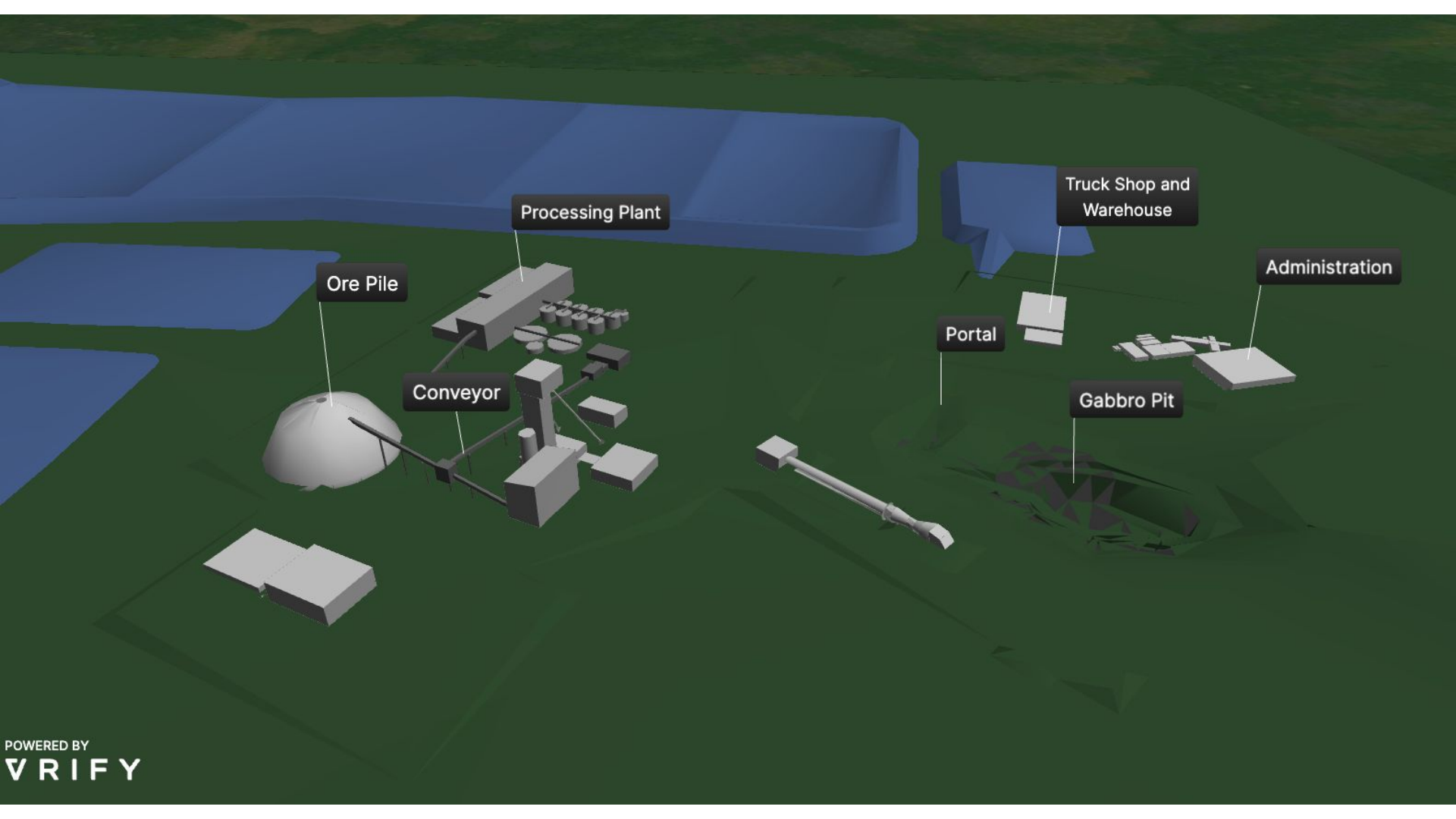
Emergency Pond

Truck Shop & Warehouse

Water Management Pond

Processing Plant

Gabbro Pit



Ore Pile

Processing Plant

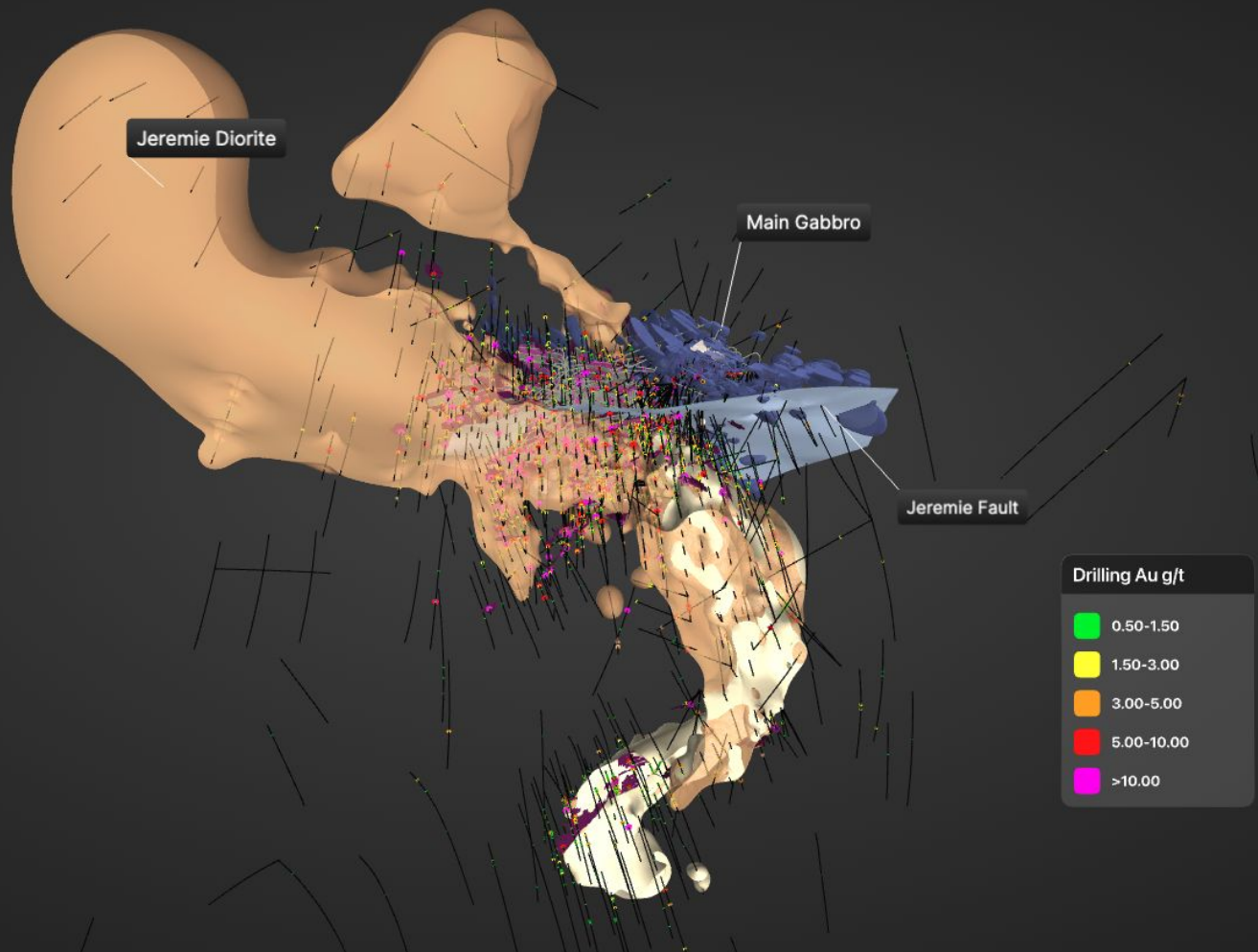
Conveyor

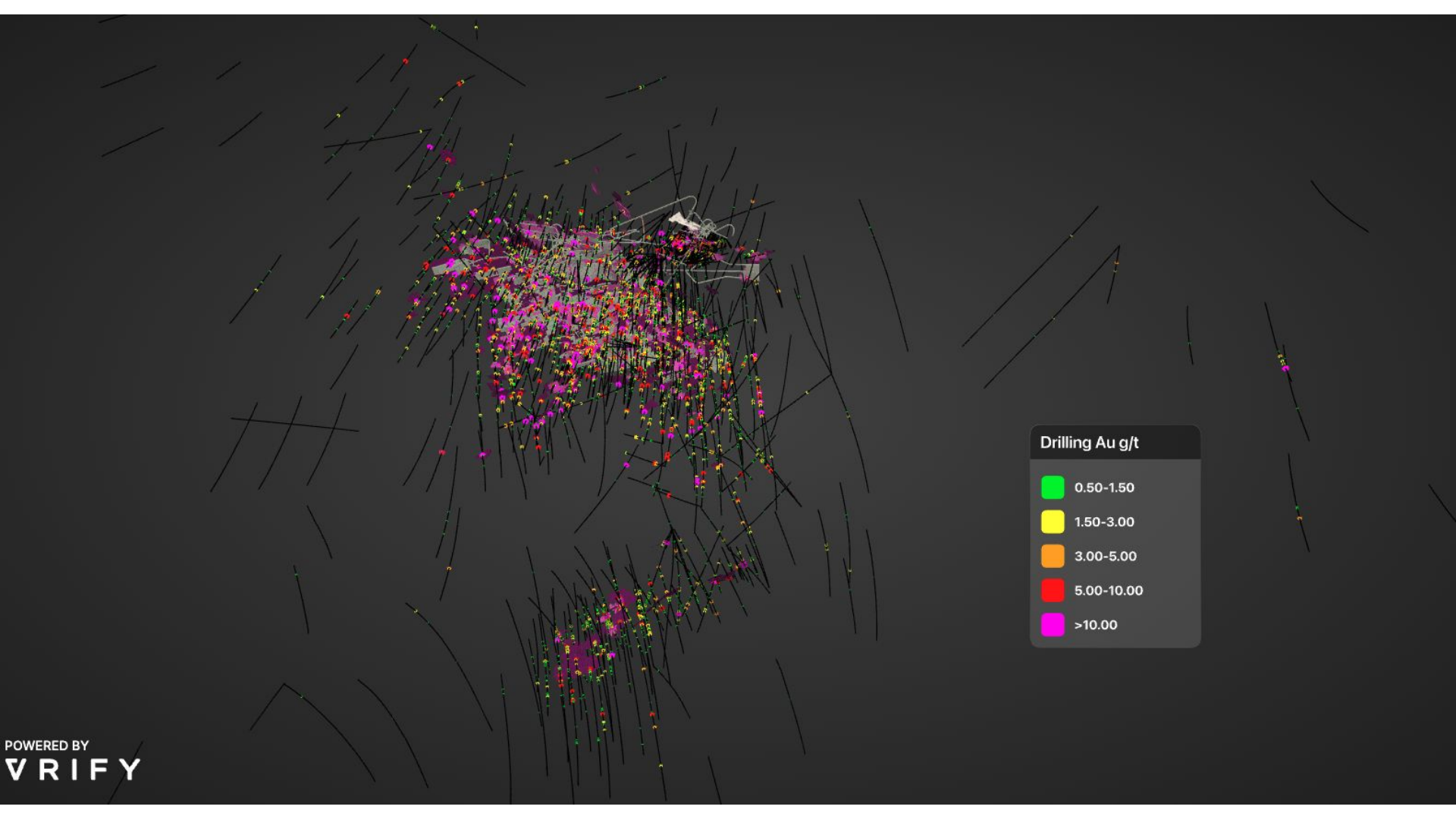
Truck Shop and Warehouse

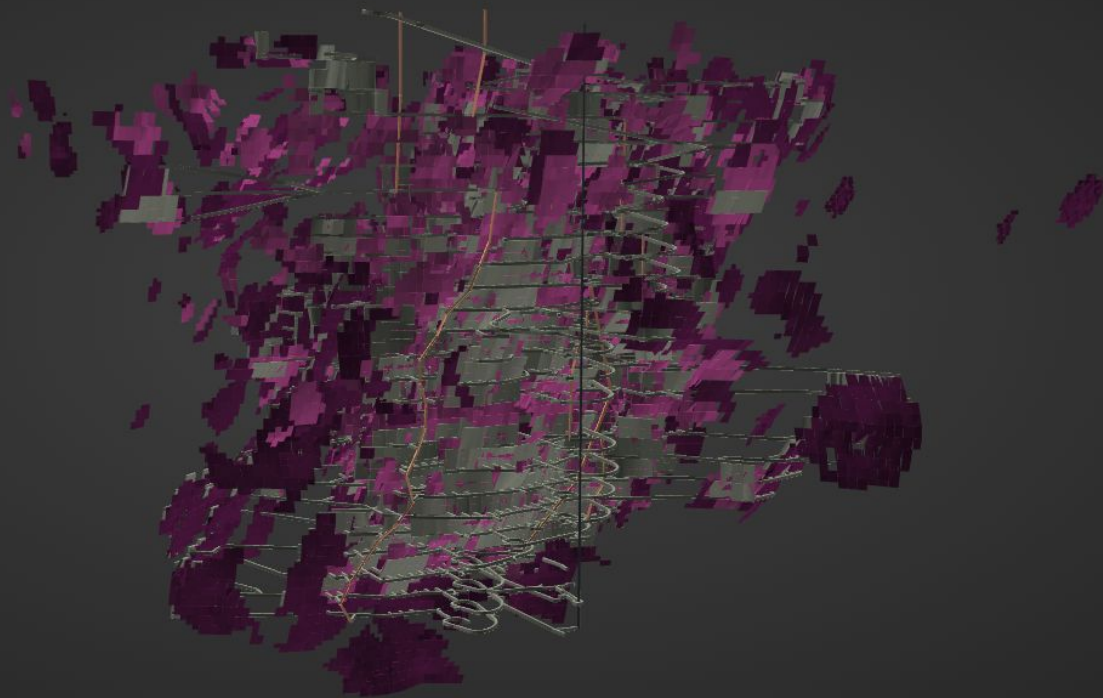
Administration

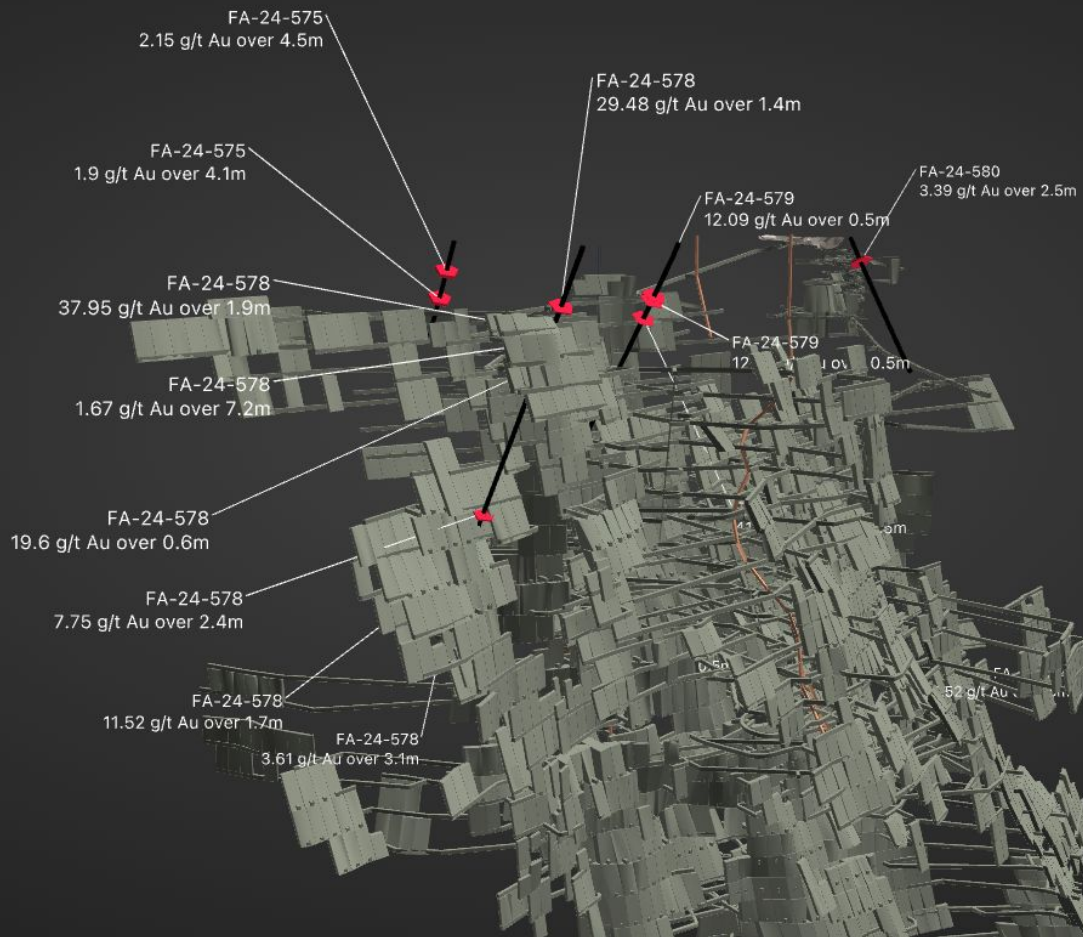
Portal

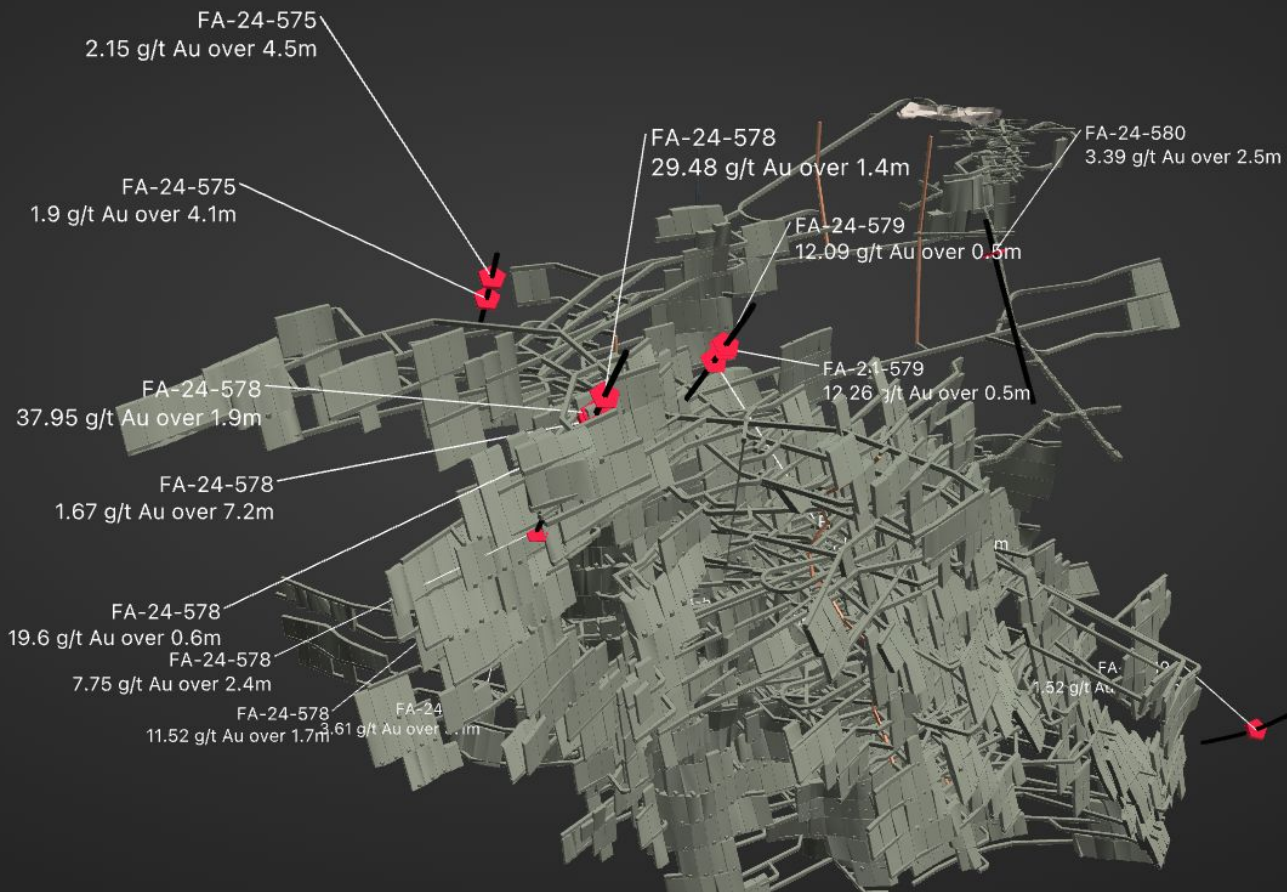
Gabbro Pit

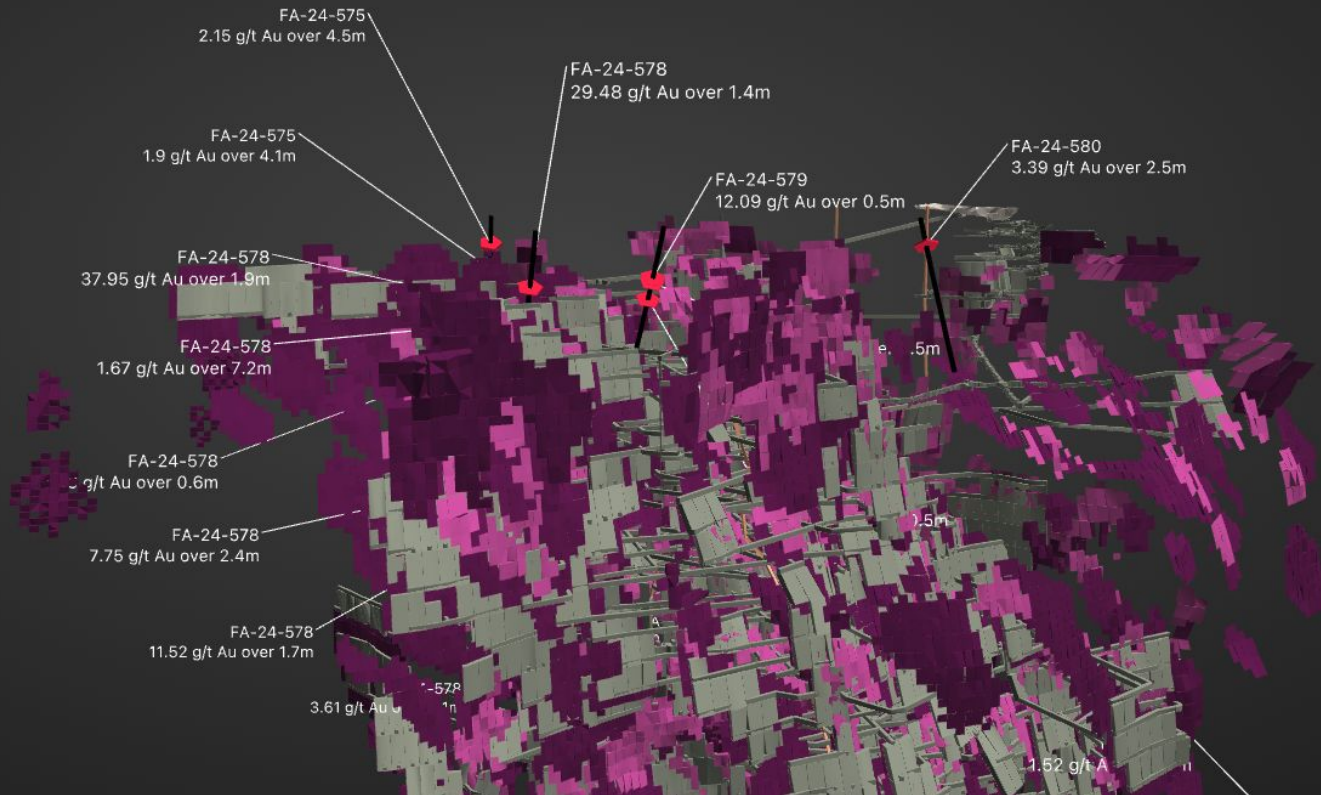


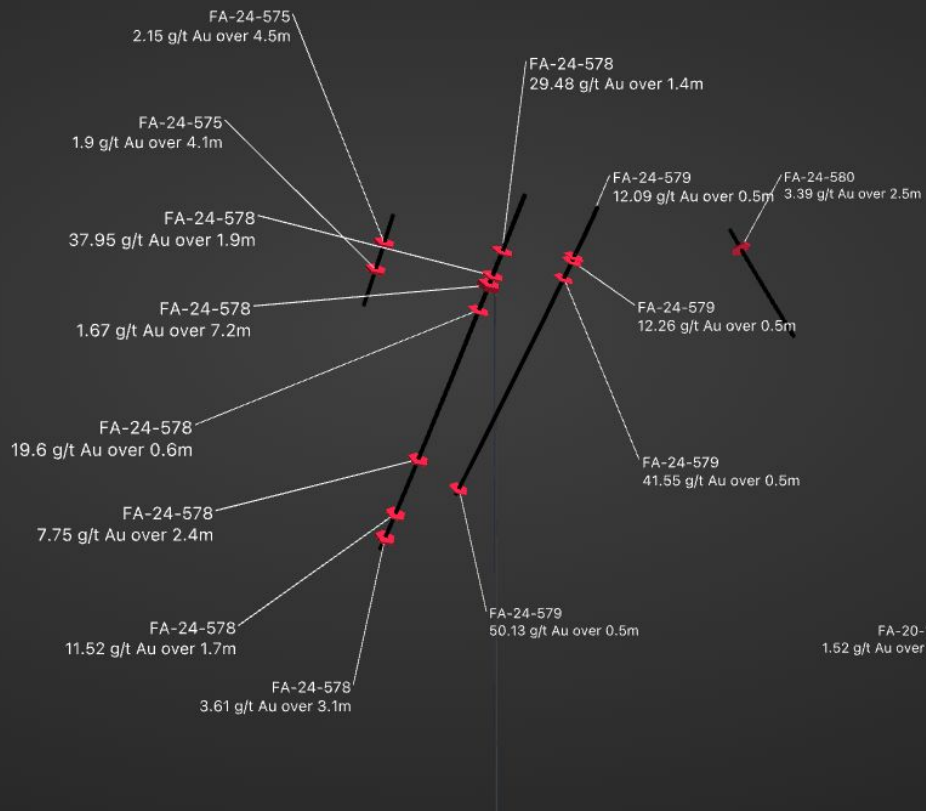








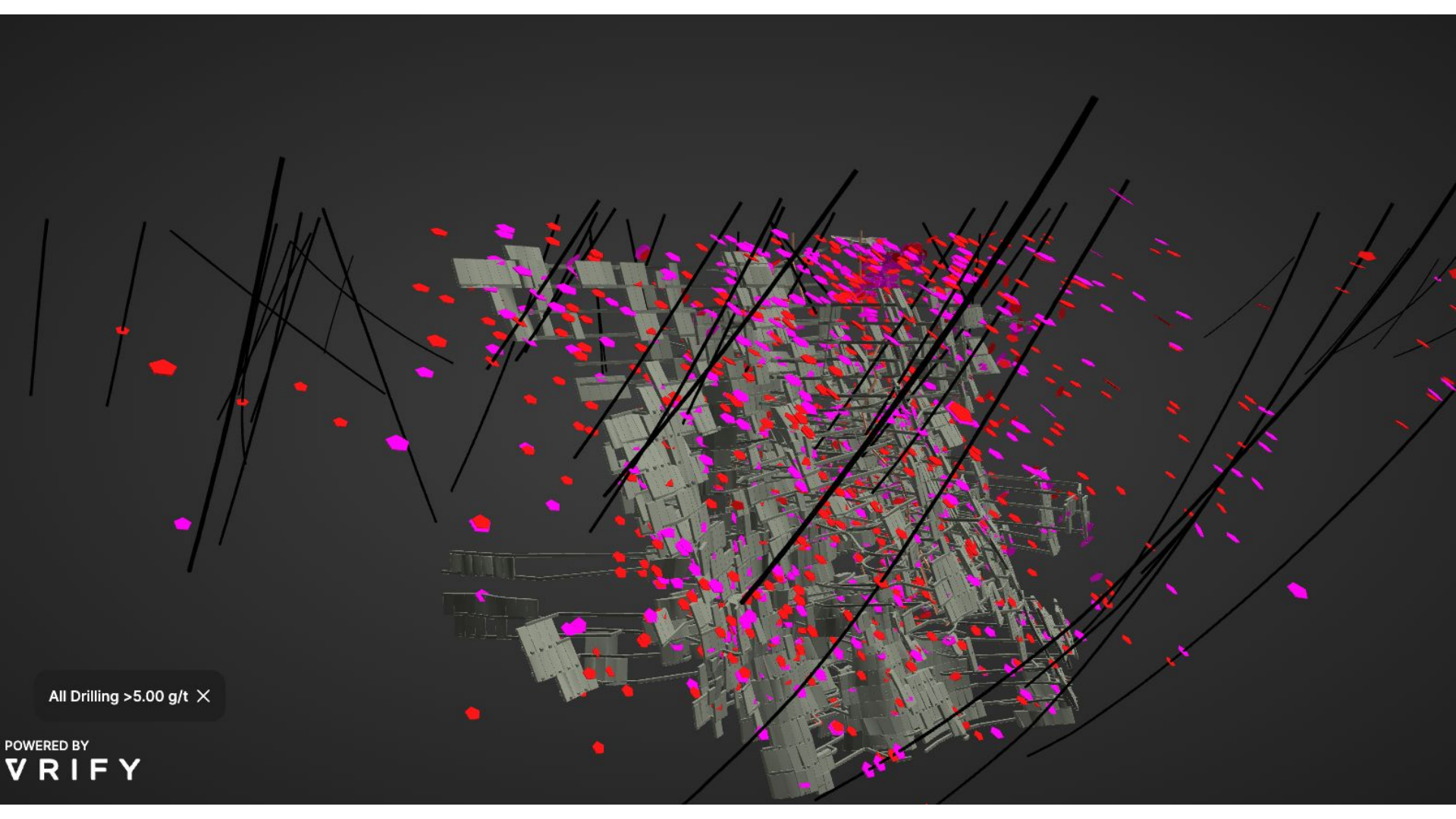






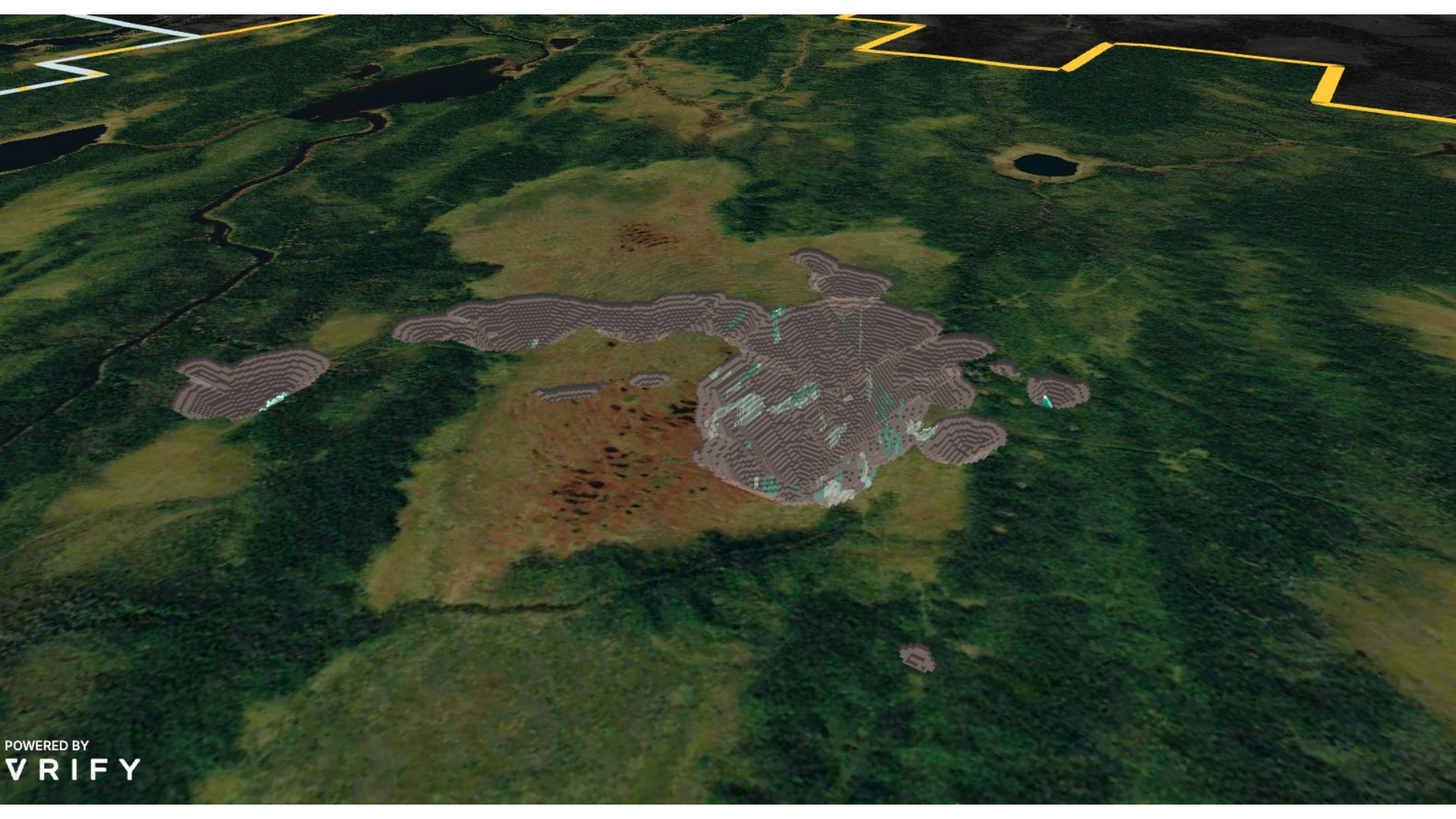
UG Development & Stopes ✕

POWERED BY
VRIFY



All Drilling >5.00 g/t ✕

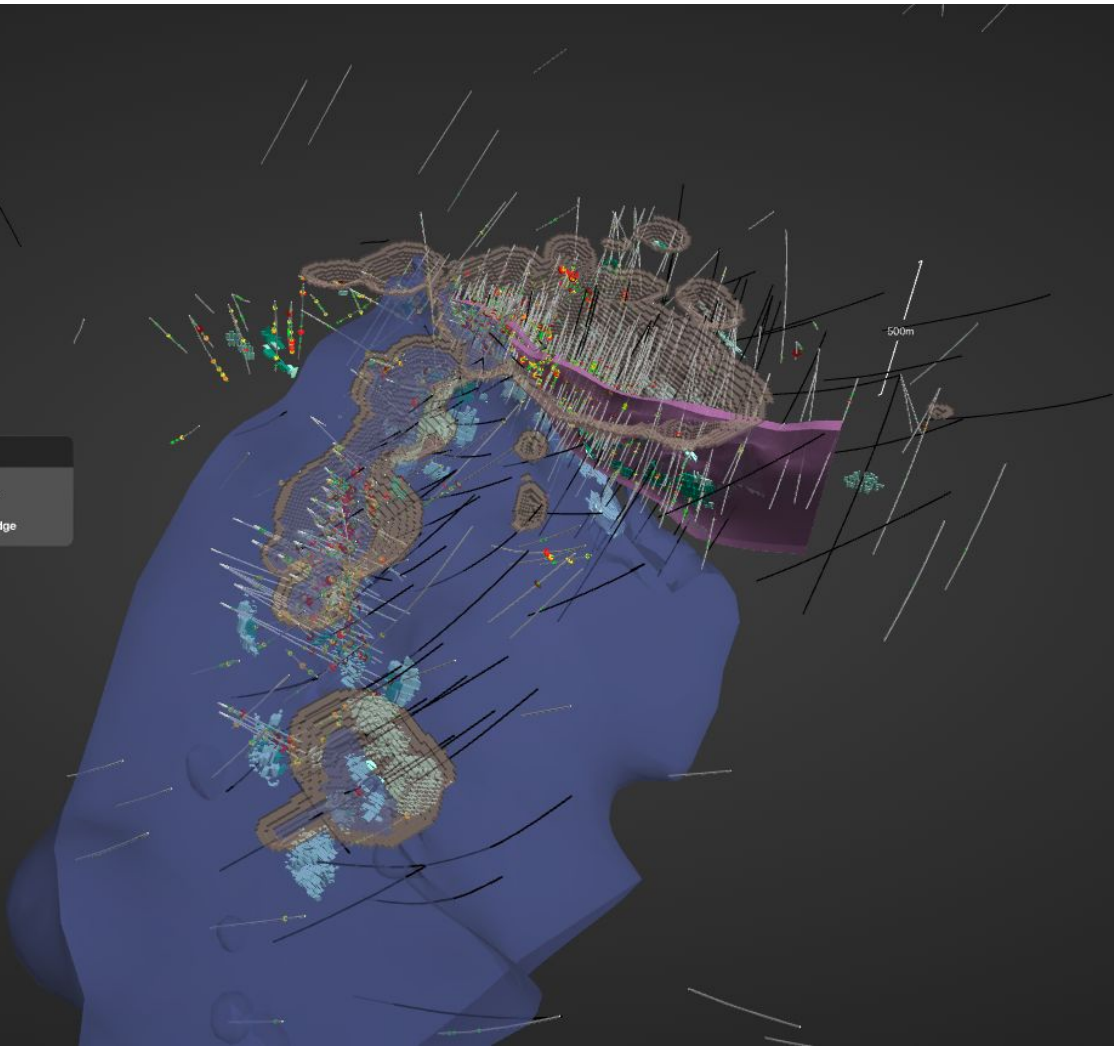
POWERED BY
VRIFY

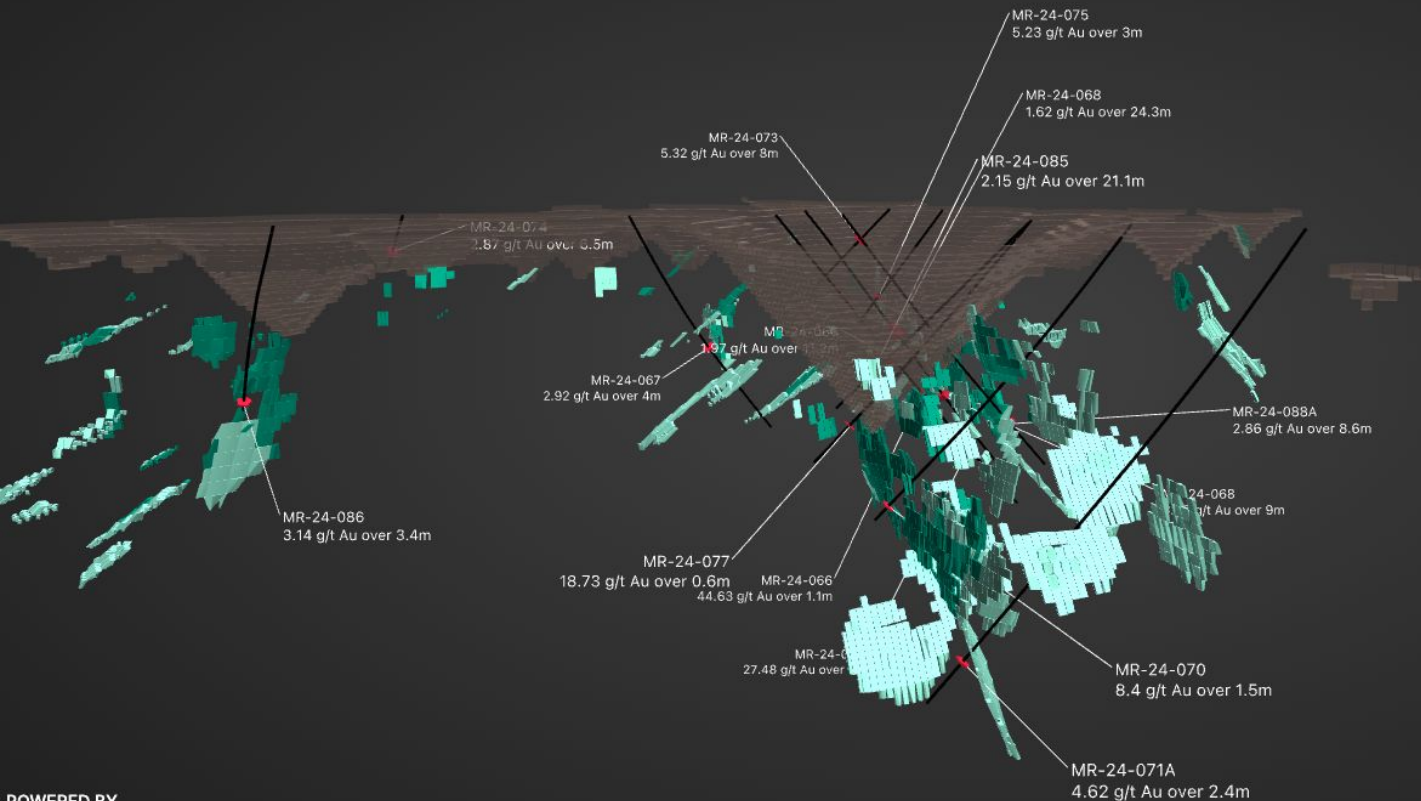


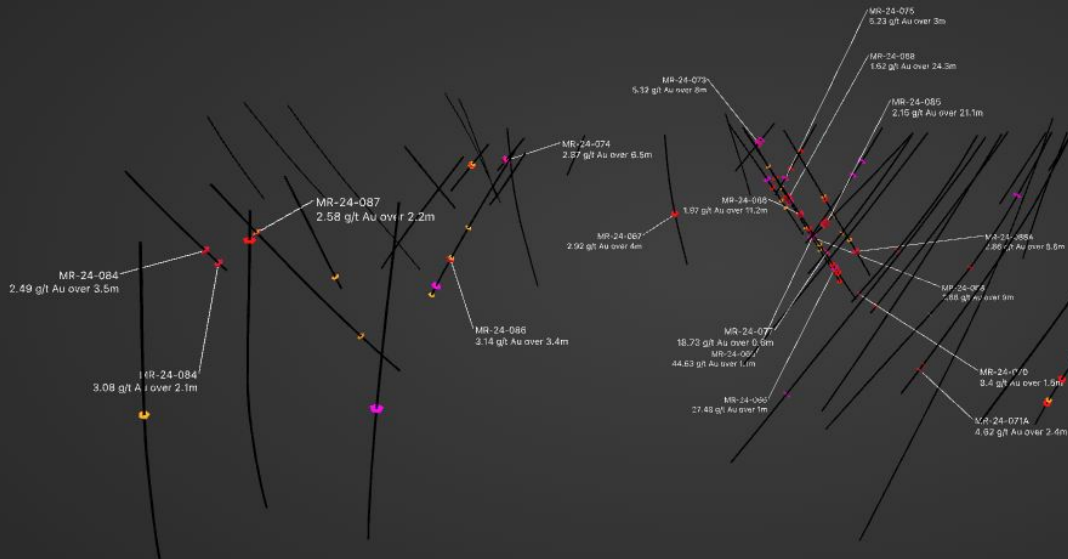
Legend

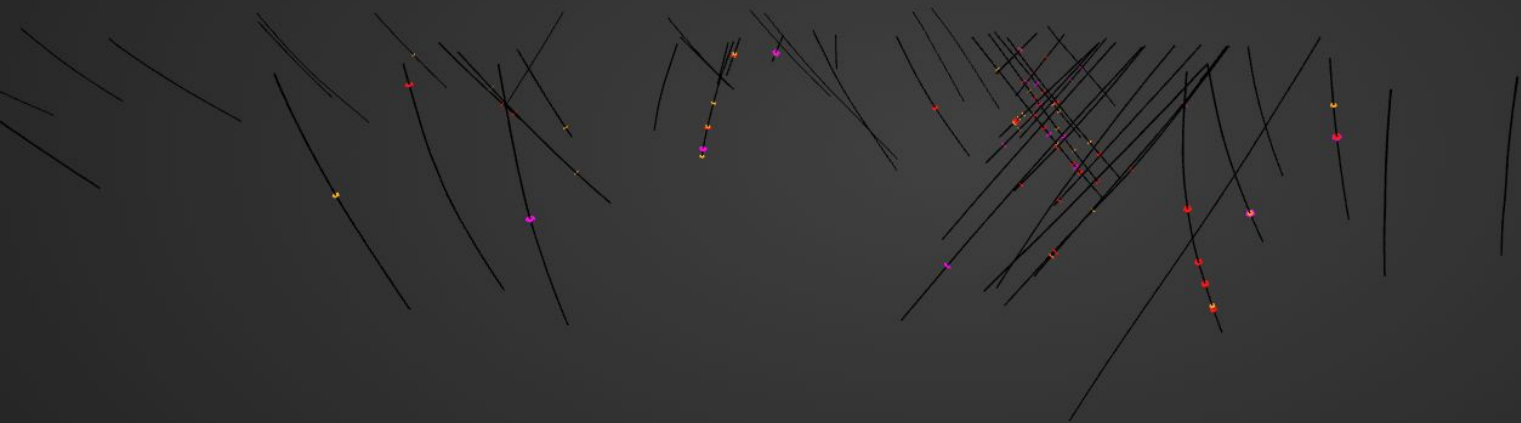
- Historic
- Wallbridge

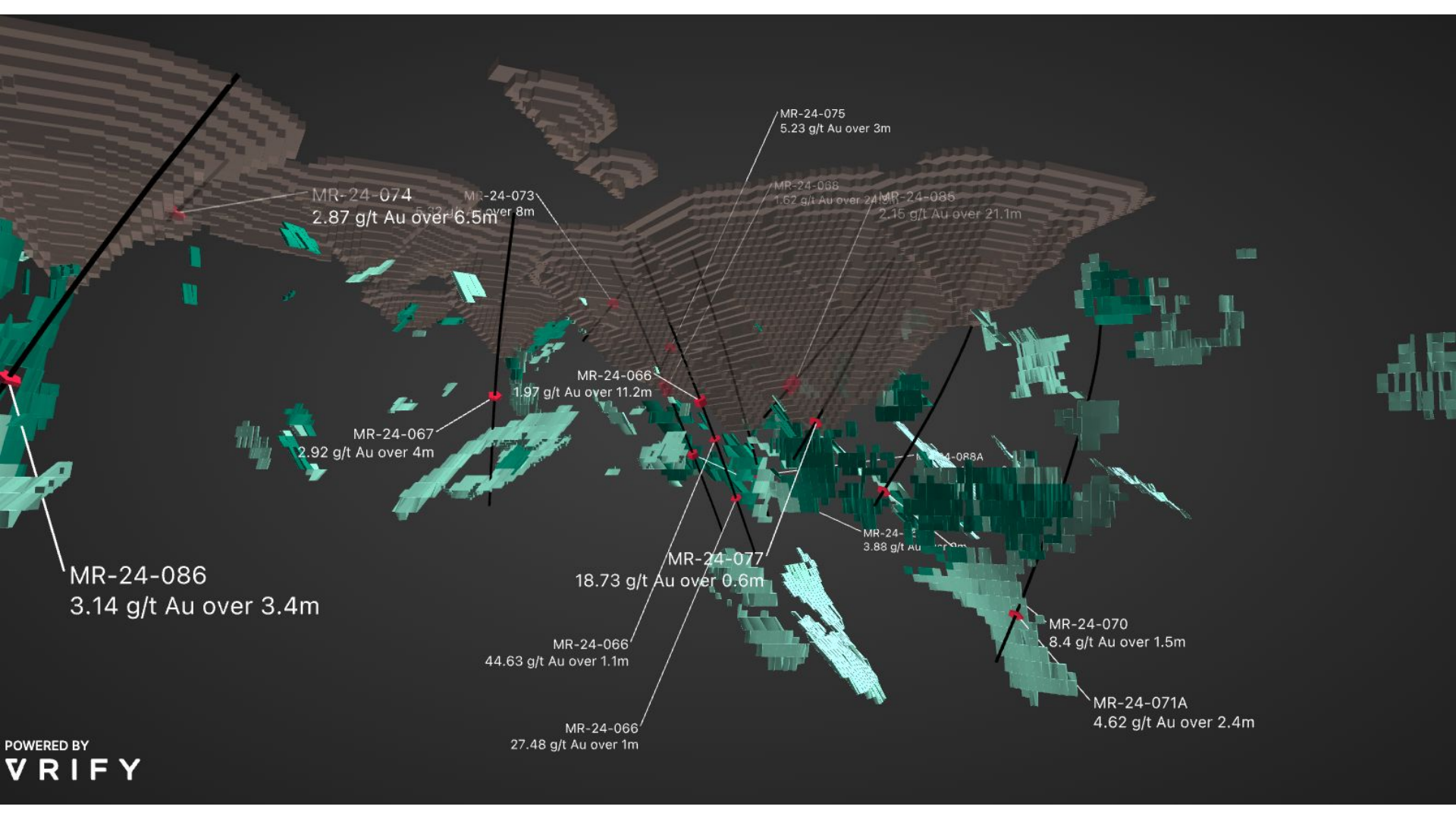
500m

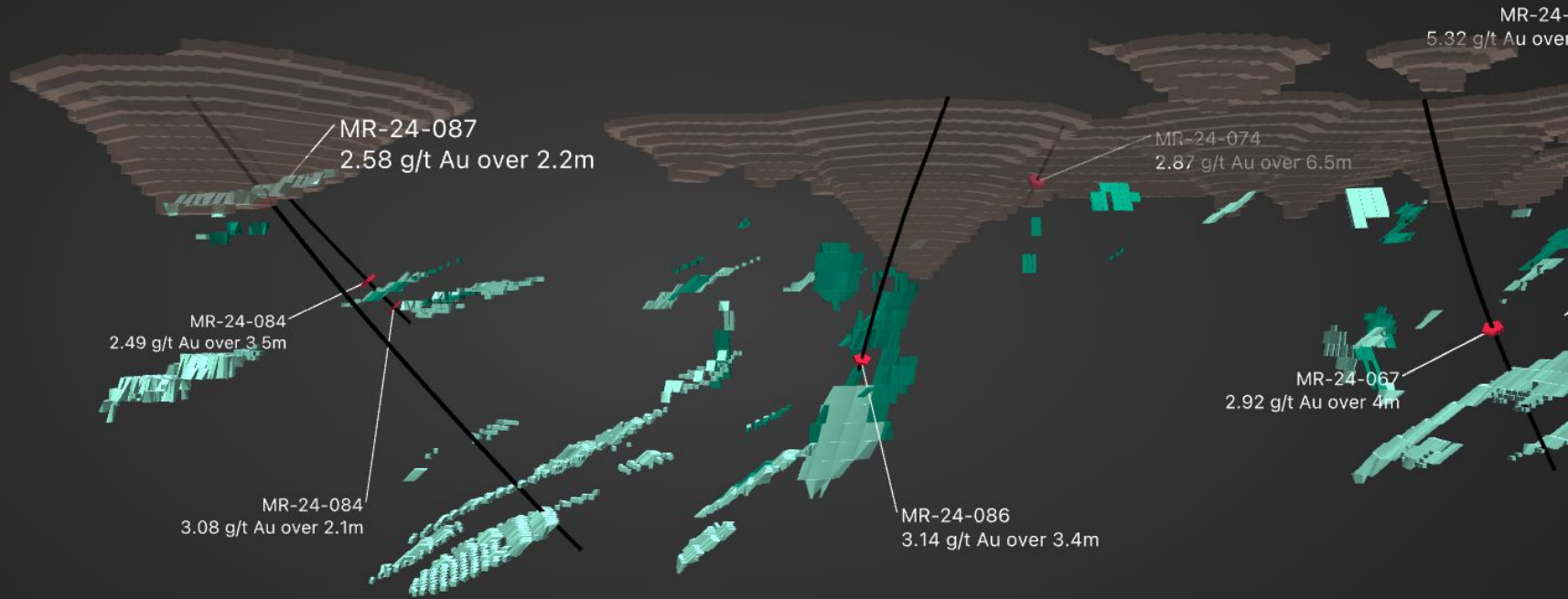


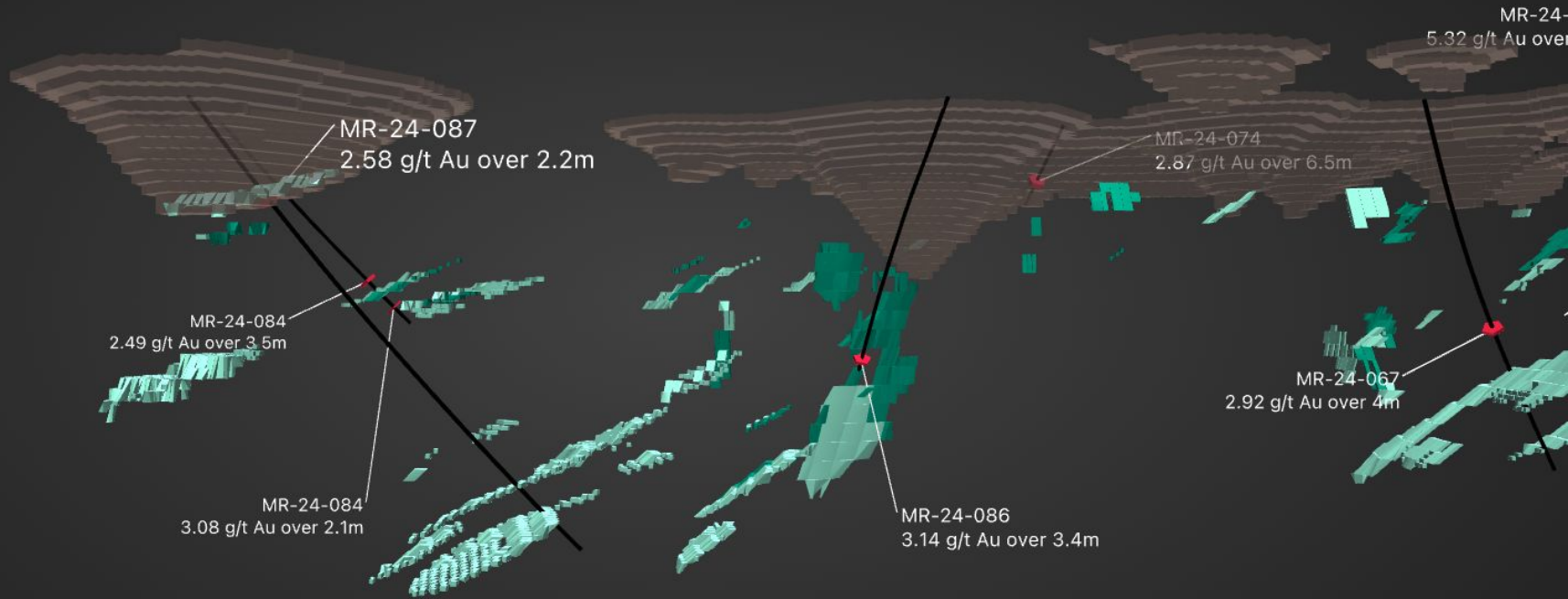


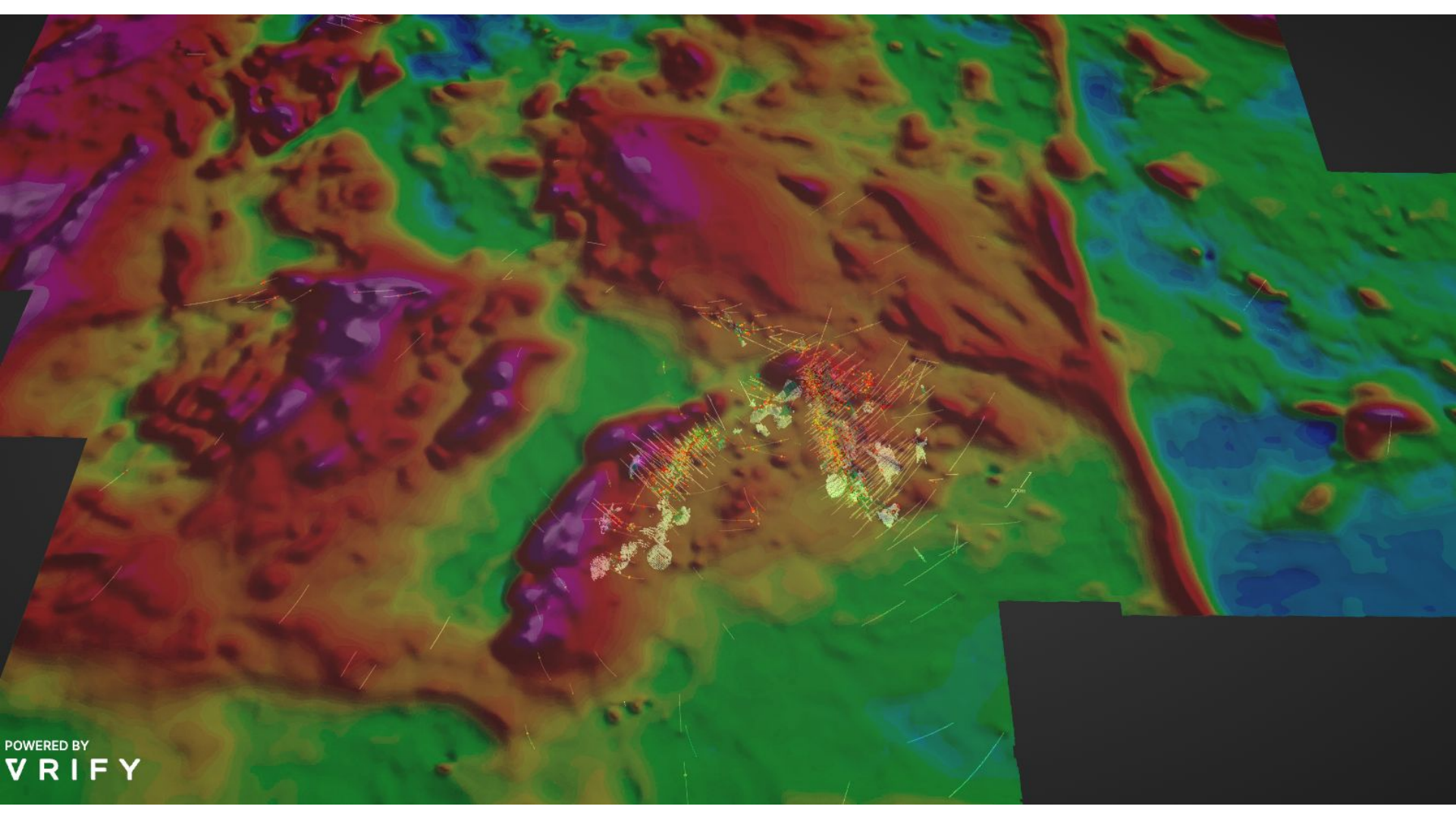












POWERED BY
VRIFY

